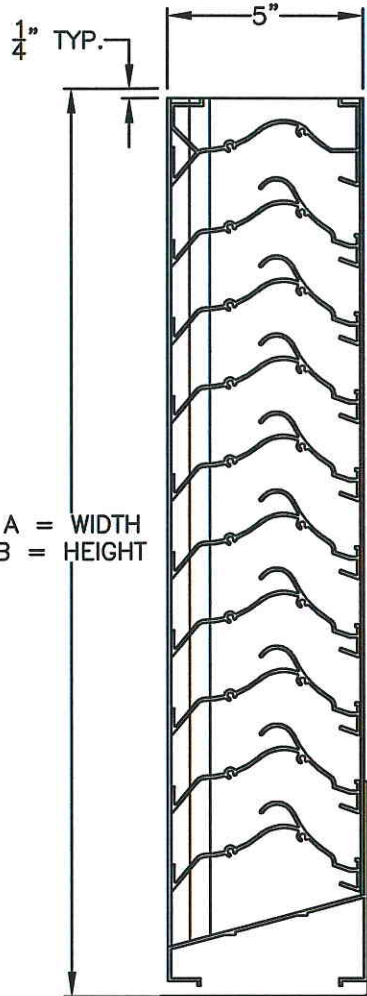


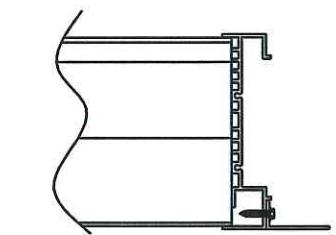
HURRICANE LOUVER: ALUMINUM 5" DEEP,
FIXED DRAINABLE SIGHTPROOF TYPE BLADE,
WITHSTANDS DESIGN PRESSURE UP TO +/- 120 PSF



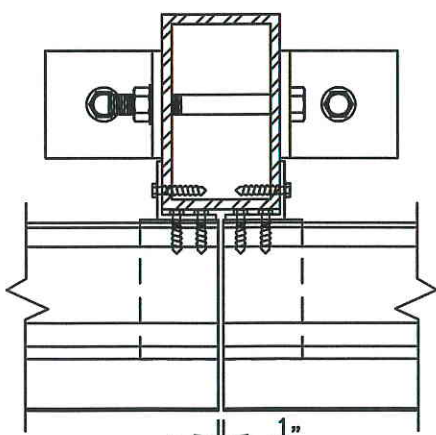
SECTION VIEW

A = WIDTH
B = HEIGHT

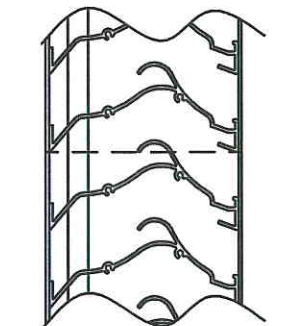
SILL PAN
(OPTIONAL)



OPTIONAL FLANGED FRAME
(JAMB SHOWN)



ARCHITECTURAL VERTICAL
MULLION OPTIONAL



STANDARD HORIZONTAL
MULLION

MODEL EA-52 STANDARD SPECIFICATIONS

FRAME: 5" DEEP CHANNEL, 0.078" THICK 6063-T6 EXTRUDED ALUMINUM ALLOY.

BLADES: 0.060" THICK 6063-T6 EXTRUDED ALUMINUM ALLOY.
0.080" OPTIONAL.

FINISH: MILL.

SCREEN: 1/2" REMOVABLE EXPANDED ALUMINUM BIRD SCREEN,
LOCATED ON INTERIOR.

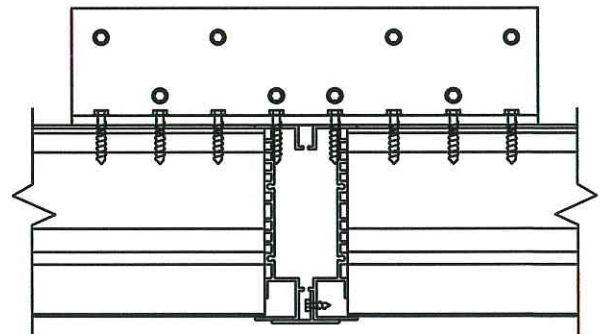
MAXIMUM PANEL SIZE: 60" x 96".
WINDLOAD REQUIREMENTS MAY LIMIT PANEL SIZES.

MINIMUM PANEL SIZE: 12" x 12".

DIMENSIONS: "A" (WIDTH) AND "B" (HEIGHT) ARE OPENING SIZES.
LOUVERS ARE MADE 1/2" UNDERSIZE.

DESIGN DATA: PASSED MIAMI-DADE COUNTY FLORIDA TEST PROTOCOLS
TAS (PA) 201, TAS (PA) 202, AND TAS (PA) 203.

NOA NO.: 09-1015.09
FBC NO.: PENDING



STANDARD VERTICAL MULLION



Arrow United Industries
EA-52 louver shown herein is
licensed to bear the AMCA
Seal. The ratings shown are
based on tests and procedures
performed in accordance with
AMCA Publication 511 and comply
with the requirements of the AMCA
Certified Ratings Program. The AMCA
Certified Ratings Seal applies to air
performance ratings, water penetration
ratings, and wind driven rain ratings.



ARROW UNITED INDUSTRIES
A DIVISION OF MESTEK, INC.

314 RIVERSIDE DRIVE
WYALUSING, PA 18853

TEL:(570)746-1888 FAX:(570)746-9286

EA-52 STATIONARY LOUVER

DRN. BY

DWG. NO.

REV.

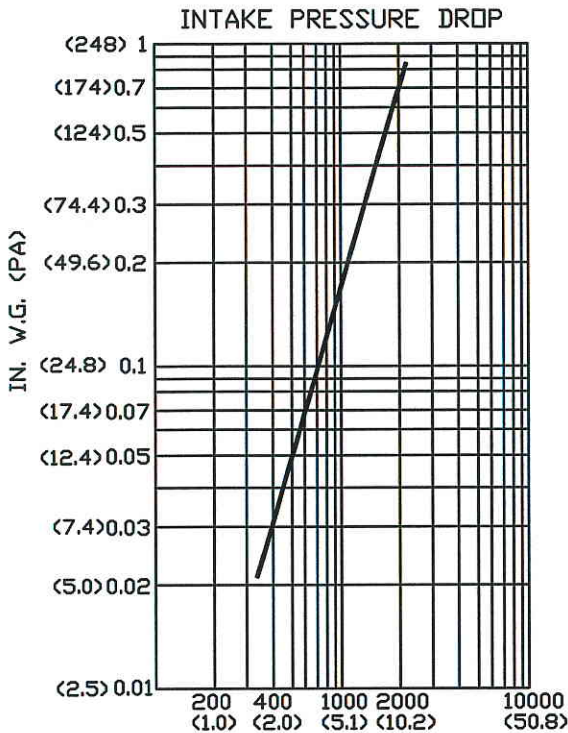
DATE

EA-52

WATER PENETRATION :0.01 OZ (3.0G) AT 1250 FPM (6.35 M/S) RECOMMENDED FREE AREA VELOCITY
 PRESSURE DROP :0.31 IN WG (76.8 PA) AT 1250 FPM (6.35 M/S) AND 8850 SCFM (4.18 SCM/S)
 FREE AREA :7.08 SQ FT (0.658 SQ M) = 44.3% FOR 48"x48" (1.22M x 1.22M) TEST SIZE

FREE AREA IN SQUARE FEET (SQ METERS)

		WIDTH								
		IN	12	24	36	48	60	72	84	96
HEIGHT	IN	MM	305	610	914	1219	1524	1829	2134	2438
	12	0.21	0.49	0.76	1.04	1.31	1.58	1.86	2.13	2.13
	305	0.020	0.046	0.071	0.097	0.122	0.147	0.173	0.198	0.198
	24	0.63	1.43	2.24	3.04	3.85	4.65	5.46	6.26	6.26
	610	0.059	0.133	0.208	0.282	0.358	0.432	0.507	0.582	0.582
	36	1.04	2.38	3.72	5.05	6.39	7.73	9.06	10.40	10.40
	914	0.097	0.221	0.346	0.469	0.594	0.718	0.842	0.966	0.966
	48	1.46	3.33	5.19	7.08	8.93	10.80	12.67	14.53	14.53
	1219	0.136	0.309	0.482	0.658	0.830	1.003	1.177	1.350	1.350
	60	1.88	4.27	6.67	9.07	11.47	13.87	16.27	18.67	18.67
1524	0.175	0.397	0.620	0.843	1.066	1.289	1.512	1.734	1.734	
72	2.29	5.22	8.15	11.08	14.01	16.94	19.87	22.80	22.80	
1829	0.213	0.485	0.757	1.029	1.302	1.574	1.845	2.118	2.118	
84	2.71	6.17	9.63	13.09	16.55	20.01	23.47	26.93	26.93	
2134	0.252	0.573	0.895	1.216	1.538	1.859	2.180	2.502	2.502	
96	3.12	7.11	11.11	15.10	19.09	23.08	27.08	31.07	31.07	
2438	0.290	0.661	1.032	1.403	1.774	2.144	2.516	2.886	2.886	



VELOCITY THROUGH FREE AREA FPM (M/S)
 STANDARD AIR- .075 LBS PER CU FT

RATINGS DO NOT INCLUDE THE EFFECTS OF A WIRE BIRDSCREEN
 TEST BASED ON A 48"x48" TEST SIZE PER AMCA STANDARD 511

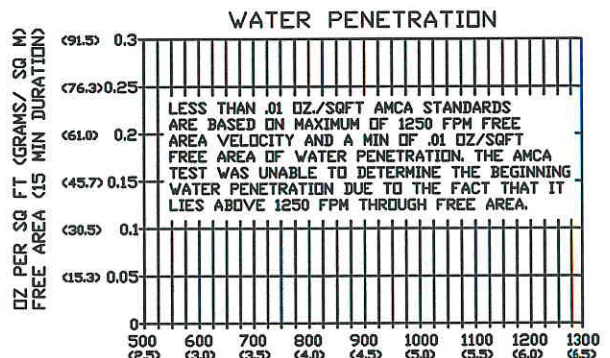
WIND-DRIVEN RAIN PENETRATION CLASSES:		DISCHARGE LOSS COEFFICIENT CLASSES:	
CLASS	EFFECTIVENESS	CLASS	COEFFICIENT
A	100% TO 99%	1	0.4 & ABOVE
B	98.9% TO 95%	2	0.3 TO 0.399
C	94.9% TO 80%	3	0.2 TO 0.299
D	BELOW 80%	4	0.199 & BELOW

WIND DRIVEN RAIN PERFORMANCE 29 MPH (46.7 KPH) WITH 3 IN/H (76 MM/H)

WATER PENETRATION CLASS	EFFECTIVENESS RATIO	COEFFICIENT OF DISCHARGE CLASS	CORE VELOCITY	VENTILATION AIRFLOW	FREE AREA VELOCITY
CLASS A	99.0%	CLASS 3	583 FPM (3 M/S)	6276 CFM (3 CM/S)	1133 FPM (5.8 M/S)

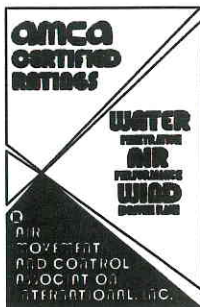
WIND DRIVEN RAIN PERFORMANCE 50 MPH (80.5 KPH) WITH 8 IN/H (203 MM/H)

WATER PENETRATION CLASS	EFFECTIVENESS RATIO	COEFFICIENT OF DISCHARGE CLASS	CORE VELOCITY	VENTILATION AIRFLOW	FREE AREA VELOCITY
CLASS B	95.7%	CLASS 3	673 FPM (3.5 M/S)	7243 CFM (3 CM/S)	1307 FPM (6.68 M/S)



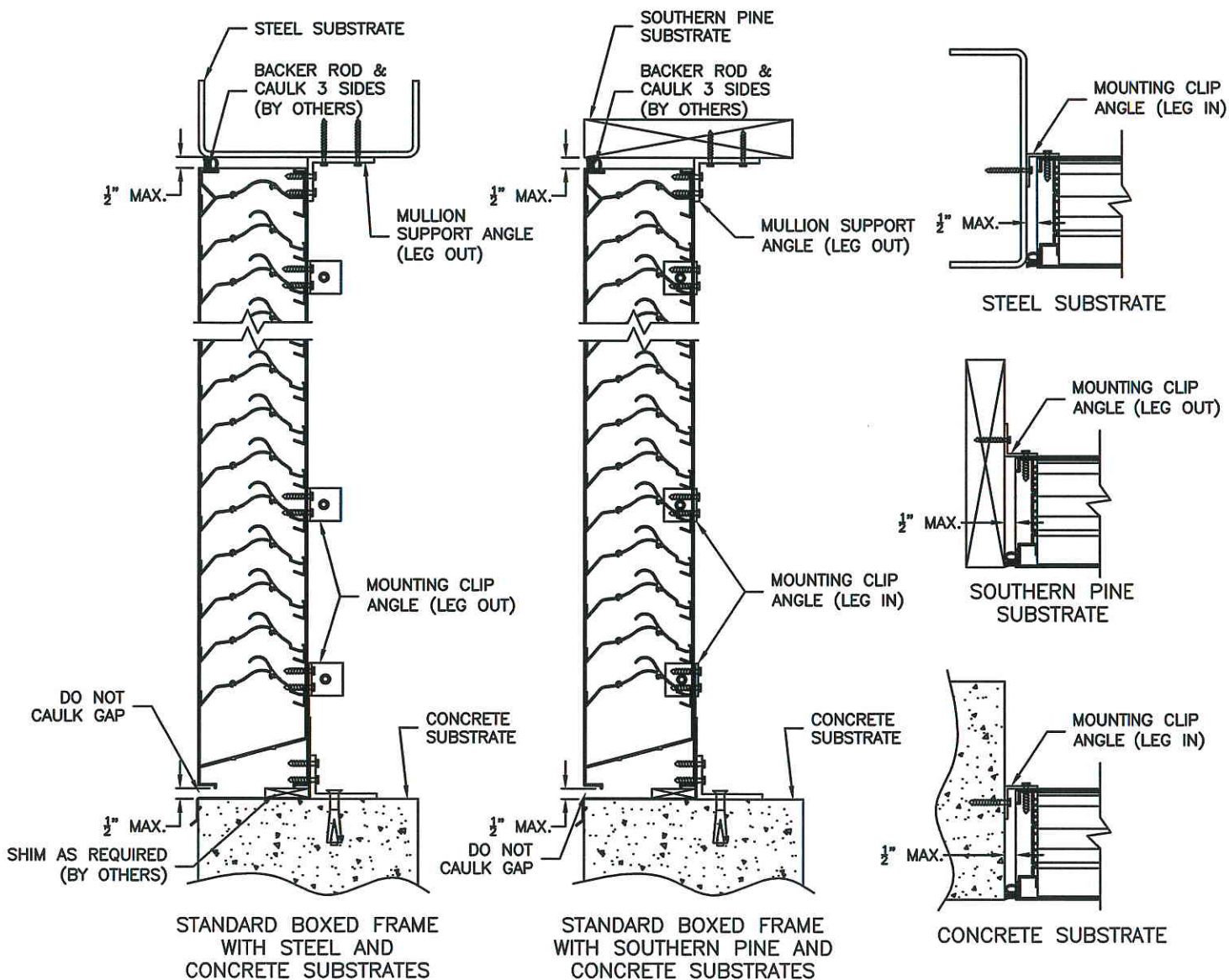
VELOCITY THROUGH FREE AREA FPM (M/S)

BOTH MAXIMUM RECOMMENDED FREE AREA VELOCITY AND BEGINNING OF WATER PENETRATION ARE 1250 FPM AT STANDARD AIR -0.75 LBS PER CU FT. THE ABOVE WATER PENETRATION DATA IS BASED ON MILL FINISH, 48"x48" TEST SIZE PER AMCA STANDARD 511.



ARROW UNITED CERTIFIES THAT THE MODEL EA-52 SHOWN HEREIN IS LICENSED TO BEAR THE AMCA SEAL. THE RATINGS SHOWN ARE BASED ON TESTS AND PROCEDURES PERFORMED IN ACCORDANCE WITH AMCA PUBLICATION 511 AND COMPLY WITH THE REQUIREMENTS OF THE AMCA CERTIFIED RATINGS PROGRAM. THE AMCA CERTIFIED RATINGS SEAL APPLIES TO AIR PERFORMANCE, WATER PENETRATION, AND WIND DRIVEN RAIN RATINGS.

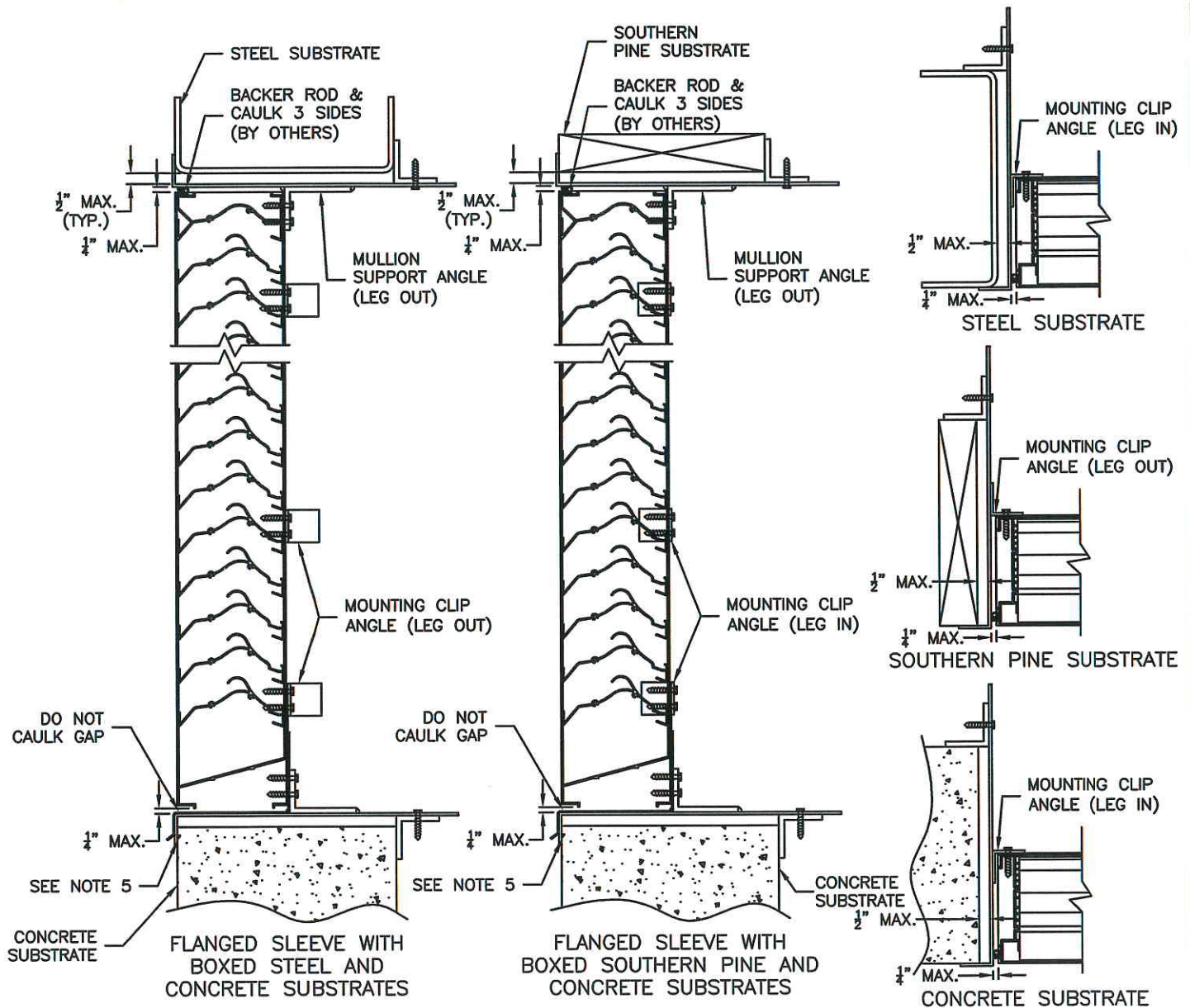
STANDARD BOXED FRAME EA-52 INSTALLATION INSTRUCTIONS



NOTES:

- 1) MOUNTING CLIP ANGLES AND MULLION SUPPORT ANGLES CAN BE INSTALLED WITH "LEGS IN" OR "LEGS OUT" FOR ANY APPROVED SUBSTRATE.
- 2) "LEGS OUT" IS THE STANDARD CONSTRUCTION, "LEGS IN" IS OPTIONAL.
- 3) USE SHIMS TO OBTAIN UNIFORM CLEARANCE BETWEEN THE LOUVER AND THE LOUVER OPENING ON ALL SIDES, SHIMS ARE BY OTHERS.
- 4) SHIMS UNDER SILL PANS MUST ALLOW ENOUGH SPACE TO INSERT "LEG IN" OPTION INTO THE OPENING.
- 5) SEE DADE COUNTY NOA 09-1015.09 FOR INSTALLATION DETAILS.

FLANGED SLEEVE EA-52 INSTALLATION INSTRUCTIONS



NOTES:

- 1) MOUNTING CLIP ANGLES AND MULLION SUPPORT ANGLES CAN BE INSTALLED WITH "LEGS IN" OR "LEGS OUT" FOR ANY APPROVED SUBSTRATE.
- 2) "LEGS OUT" IS THE STANDARD CONSTRUCTION, "LEGS IN" IS OPTIONAL.
- 3) THE FLANGED SLEEVE OPTION CAN BE USED WITH ANY APPROVED SUBSTRATE.
- 4) USE SHIMS TO OBTAIN UNIFORM CLEARANCE BETWEEN THE LOUVER AND THE LOUVER OPENING ON ALL SIDES, SHIMS ARE BY OTHERS.
- 5) SEALANT/CAULK BETWEEN FLANGED ANGLE SLEEVE AND SUBSTRATE (TYP. 4 SIDES) BY INSTALLER.
- 6) TWO MOUNTING ANGLES RUN THE FULL HEIGHT AND LENGTH OF LOUVER.
- 7) SEE DADE COUNTY NOA 09-1015.09 FOR INSTALLATION DETAILS.