



**BUILDING CODE COMPLIANCE OFFICE (BCCO)
PRODUCT CONTROL DIVISION
NOTICE OF ACCEPTANCE (NOA)**

**MIAMI-DADE COUNTY, FLORIDA
METRO-DADE FLAGLER BUILDING
140 WEST FLAGLER STREET, SUITE 1603
MIAMI, FLORIDA 33130-1563
(305) 375-2901 FAX (305) 372-6339
www.miamidade.gov/buildingcode**

**Arrow United Industries
314 Riverside Drive (PO Box 69)
Wyalusing, PA 18853**

SCOPE:

This NOA is being issued under the applicable rules and regulations governing the use of construction materials. The documentation submitted has been reviewed by Miami-Dade County Product Control Division and accepted by the Board of Rules and Appeals (BORA) to be used in Miami Dade County and other areas where allowed by the Authority Having Jurisdiction (AHJ).

This NOA shall not be valid after the expiration date stated below. The Miami-Dade County Product Control Division (In Miami Dade County) and/or the AHJ (in areas other than Miami Dade County) reserve the right to have this product or material tested for quality assurance purposes. If this product or material fails to perform in the accepted manner, the manufacturer will incur the expense of such testing and the AHJ may immediately revoke, modify, or suspend the use of such product or material within their jurisdiction. BORA reserves the right to revoke this acceptance, if it is determined by Miami-Dade County Product Control Division that this product or material fails to meet the requirements of the applicable building code.

This product is approved as described herein, and has been designed to comply with the Florida Building Code, including the High Velocity Hurricane Zone.

DESCRIPTION: Model EA-52 5" deep Aluminum Louver

APPROVAL DOCUMENT: Drawing No. 1685, titled "EA-52 Impact Louver System", sheets 1 through 10 of 10, dated 07/23/09, prepared by W. W. Schaefer Engineering & Consulting, P.A., signed and sealed by Warren. W. Schaefer, P.E., bearing the Miami-Dade County Product Control approval stamp with the Notice of Acceptance number and approval date by the Miami-Dade County Product Control Division.

MISSILE IMPACT RATING: Large and Small Missile Impact Resistant

LABELING: Each unit shall bear a permanent label with the manufacturer's name or logo, city, state and following statement: "Miami-Dade County Product Control Approved", unless otherwise noted herein.

RENEWAL of this NOA shall be considered after a renewal application has been filed and there has been no change in the applicable building code negatively affecting the performance of this product.

TERMINATION of this NOA will occur after the expiration date or if there has been a revision or change in the materials, use, and/or manufacture of the product or process. Misuse of this NOA as an endorsement of any product, for sales, advertising or any other purposes shall automatically terminate this NOA. Failure to comply with any section of this NOA shall be cause for termination and removal of NOA.

ADVERTISEMENT: The NOA number preceded by the words Miami-Dade County, Florida, and followed by the expiration date may be displayed in advertising literature. If any portion of the NOA is displayed, then it shall be done in its entirety.

INSPECTION: A copy of this entire NOA shall be provided to the user by the manufacturer or its distributors and shall be available for inspection at the job site at the request of the Building Official.

This NOA consists of this page 1 and evidence page E-1, as well as approval document mentioned above. The submitted documentation was reviewed by **Carlos M. Utrera, P.E.**



Carlos M. Utrera
12/14/09

**NOA No. 09-1015.09
Expiration Date: January 06, 2015
Approval Date: January 06, 2010
Page 1**

NOTICE OF ACCEPTANCE: EVIDENCE SUBMITTED

A. DRAWINGS

1. Drawing No. **1685**, titled "EA-52 Impact Louver System", sheets 1 through 10 of 10, dated 07/23/09, prepared by W. W. Schaefer Engineering & Consulting, P.A., signed and sealed by Warren W. Schaefer, P.E.

B. TESTS

1. Test reports on:
 - 1) Uniform Static Air Pressure Test, Loading per FBC TAS 202-94
 - 2) Large Missile Impact Test per FBC, TAS 201-94
 - 3) Cyclic Wind Pressure Loading per FBC, TAS 203-94along with marked-up drawings and installation diagram, of "EA-52 Aluminum Louver Systems", prepared by Hurricane Test Laboratory, Inc., Report No. **0198-0305-09**, dated 09/29/09, signed and sealed by Vinu J. Abraham, P.E.
2. Test reports on:
 - 1) Uniform Static Air Pressure Test, Loading per FBC TAS 202-94
 - 2) Large Missile Impact Test per FBC, TAS 201-94
 - 3) Cyclic Wind Pressure Loading per FBC, TAS 203-94along with marked-up drawings and installation diagram, of "EA-52 Aluminum Louver Systems", prepared by Hurricane Test Laboratory, Inc., Report No. **0198-0715-09**, dated 09/30/09, signed and sealed by Vinu J. Abraham, P.E.

C. CALCULATIONS

1. Structural calculations prepared by W.W. Schaefer Engineering & Consulting, P.A., dated 10/06/09, signed and sealed by Warren W. Schaefer, P.E.

D. QUALITY ASSURANCE

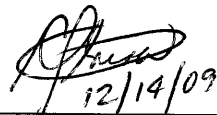
1. Miami Dade Building Code Compliance Office (BCCO)

E. MATERIAL CERTIFICATIONS

1. None.

F. STATEMENTS

1. 2007 Florida Building Code compliance letter issued by W. W. Schaefer Engineering & Consulting, P.A., dated 10/07/09, signed and sealed by Warren W. Schaefer, P.E.
2. No financial interest letter issued by W. W. Schaefer Engineering & Consulting, P.A., dated 10/13/09, signed and sealed by Warren W. Schaefer, P.E.
3. Code compliance letters issued by Hurricane Test Laboratory, Inc., dated 09/29/03 and 09/30/09, signed and sealed by Vinu J. Abraham, P.E.



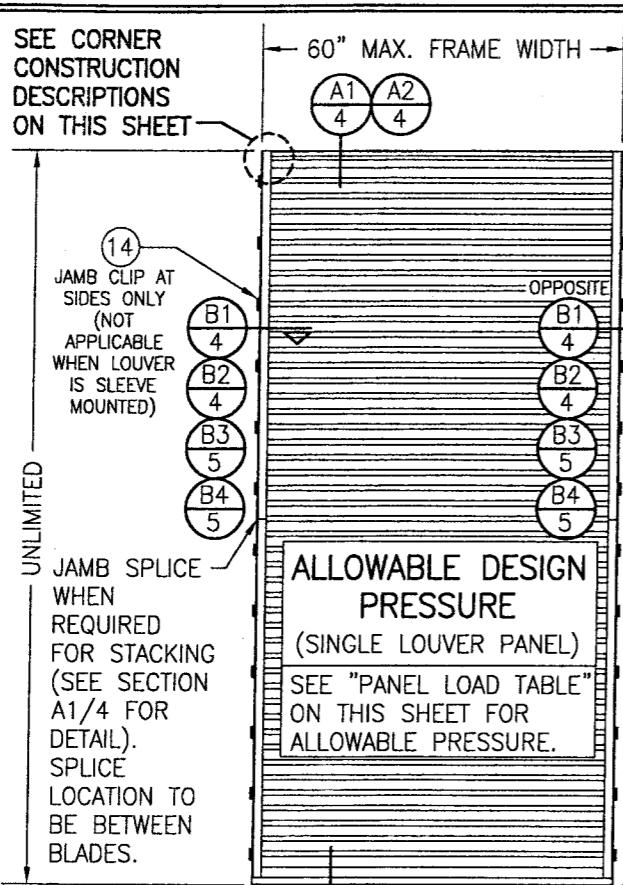
12/14/09

Carlos M. Utrera, P.E.
Product Control Examiner
NOA No. 09-1015.09

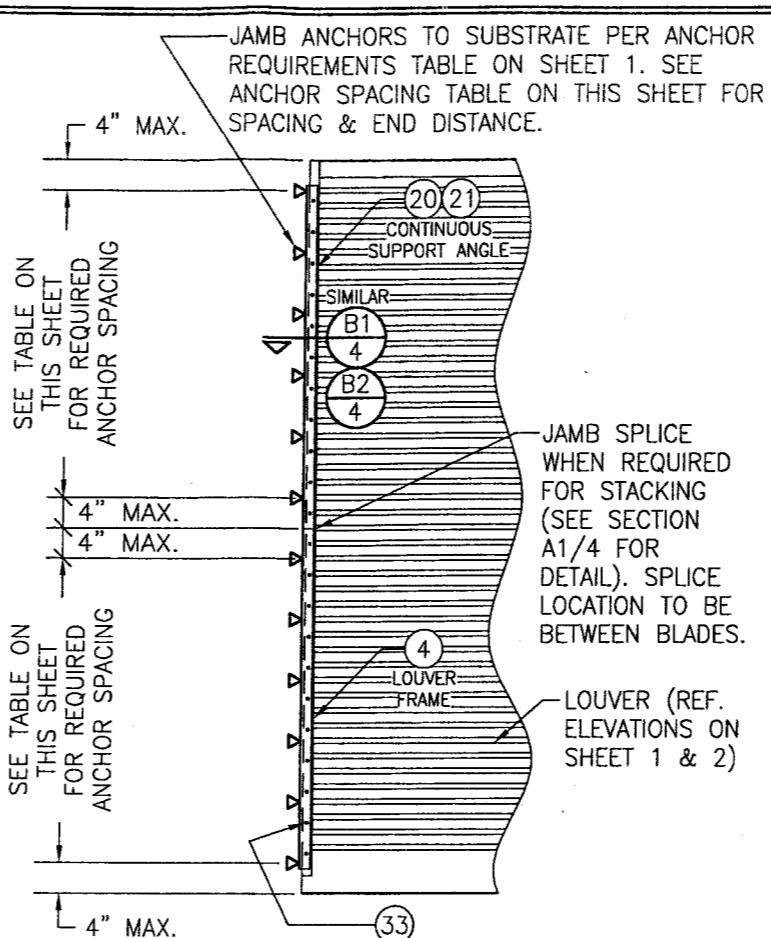
Expiration Date: January 06, 2015
Approval Date: January 06, 2010

PANEL LOAD TABLE (WITH SIDE CLIPS)		
PANEL WIDTH (IN.)	(1) CLIP SPACING (IN.)	ALLOWABLE PRESSURE (+/- PSF)
36	8	120
	13	104
	18	75
42	8	120
	13	89
	18	64
48	8	120
	13	78
	18	56
54	8	120
	13	69
	18	50
60	8	120
	13	62
	18	45

(1) CLIP SPACING WITHIN SLEEVE MOUNTED LOUVERS MAY NOT VARY AND SHALL ALWAYS BE 8".



**EXTERIOR ELEVATION:
SINGLE LOUVER PANEL
(ARCHITECTURAL & NON-ARCHITECTURAL)**
SCALE: 1/2" = 1'-0"



**INTERIOR ELEVATION:
(OPTIONAL SIDE JAMB INSTALLATION WITH
CONTINUOUS SIDE ANGLES)**
SCALE: 1/2" = 1'-0"
(FOR DETAIL NOT SHOWN, SEE OTHER ELEVATIONS)

PANEL ANCHOR SPACING/PRESSURE TABLE (WITH CONTINUOUS SIDE SUPPORT ANGLE)					
PANEL WIDTH (IN.)	ANGLE TO SUBSTRATE ANCHORS		ANGLE TO LOUVER FRAME SCREWS		ALLOWABLE PRESSURE (+/- PSF)
	SPACING (IN.)	END DIST. (IN.)	SPACING (IN.)	END DIST. (IN.)	
36	8	4	4	2	120
	13	7 1/2	7 1/2	3 3/4	104
	18	9	9	4 1/2	75
42	8	4	4	2	120
	13	7 1/2	7 1/2	3 3/4	89
	18	9	9	4 1/2	64
48	8	4	4	2	120
	13	7 1/2	7 1/2	3 3/4	78
	18	9	9	4 1/2	56
54	8	4	4	2	120
	13	7 1/2	7 1/2	3 3/4	69
	18	9	9	4 1/2	50
60	8	4	4	2	120
	13	7 1/2	7 1/2	3 3/4	62
	18	9	9	4 1/2	45

NOTE: SINGLE LOUVER PANELS MAY BE STACKED/SPLICED VERTICALLY OR THE LOUVER PANEL MAY RUN VERTICALLY TO INFINITE HEIGHT PROVIDING OPENING IS PROPERLY DESIGNED BY OTHERS TO SUPPORT THE LOUVER PANELS.

SLEEVE SPLICING NOTE FOR SLEEVE MOUNTED LOUVERS:
SLEEVE MAY BE SPLICED ALONG HORIZONTAL OR VERTICAL RUNS PROVIDING SPLICE DOES NOT OCCUR WITHIN 12" OF ANY VERTICAL MULLION CENTERLINE.

CORNER & BLADE END CONSTRUCTION:

FRAME HEAD: HORIZONTAL MEMBER IS SQUARE CUT, BUTTED TO VERTICAL MEMBERS & FASTENED WITH TWO(2) NO. 7 X 1 1/4" SMS HEX HEAD SCREWS INTO THE HORIZONTAL MEMBERS SCREW SPLINES.
FRAME SILL: VERTICAL MEMBERS ARE ANGLE CUT, BUTTED TO HORIZONTAL MEMBER & FASTENED WITH TWO(2) NO. 7 X 1 1/4" SMS SCREWS INTO THE VERTICAL MEMBERS SCREW SPLINES.
BLADE END: HORIZONTAL BLADES ARE SQUARE CUT, BUTTED TO VERTICAL MEMBERS & FASTENED WITH TWO(2) NO. 7 OR NO. 8 X 1 1/4" SMS SCREWS INTO THE BLADE SCREW SPLINES.

GENERAL NOTES:

- THESE LOUVER SYSTEMS HAVE BEEN TESTED, ANALYZED & APPROVED FOR DESIGN PRESSURES NOT TO EXCEED THOSE SHOWN IN THE "ALLOWABLE DESIGN PRESSURE TABLE(S)".
- OPENINGS, BUCKING & BUCKING FASTENERS MUST BE PROPERLY DESIGNED & INSTALLED TO TRANSFER WIND LOADS TO THE STRUCTURE. IT SHALL BE THE RESPONSIBILITY OF THE PERMIT HOLDER TO VERIFY THE STRUCTURAL INTEGRITY OF THE EXISTING STRUCTURE TO SUPPORT THE LOADS SUPERIMPOSED BY THE LOUVERS.
- ALL HARDWARE & FASTENERS SHALL BE IN ACCORDANCE WITH THESE DRAWINGS & SHALL NOT VARY UNLESS SPECIFICALLY MENTIONED ON THE DRAWINGS. SPECIFIED ANCHOR EMBED TO BASE MATERIAL SHALL BE BEYOND WALL FINISH OR STUCCO.
- THE DETAILS & SPECIFICATIONS SHOWN HEREIN REPRESENT THE PRODUCTS TESTED & PROPOSED FOR IMPACT, CYCLIC & UNIFORM STATIC AIR PRESSURE TESTING IN CONFORMANCE WITH THE FLORIDA BUILDING CODE PROTOCOLS TAS-201, 202 & 203 FOR LARGE MISSILE IMPACT LOUVERS.
- THESE LOUVER SYSTEMS HAVE BEEN DESIGNED IN ACCORDANCE WITH AND MEET THE REQUIREMENTS OF THE FLORIDA BUILDING CODE (FBC) INCLUDING HIGH VELOCITY HURRICANE ZONES (HVHZ).
- IMPACT SHUTTERS ARE NOT REQUIRED WITH THESE LOUVER SYSTEMS.
- ALL ANCHORS SECURING LOUVER FRAME TO PRESSURE TREATED BUCKS OR WOOD FRAMING SHALL BE CAPABLE OF RESISTING CORROSION CAUSED BY THE PRESSURE TREATING CHEMICALS IN THE WOOD.
- DETERMINE THE POSITIVE & NEGATIVE DESIGN LOADS TO USE WHEN REFERENCING THESE DOCUMENTS IN ACCORDANCE WITH THE GOVERNING CODE AND GOVERNING WIND VELOCITY. FOR WIND LOAD CALCULATIONS IN ACCORDANCE WITH THE FLORIDA BUILDING CODE, A DIRECTIONALITY FACTOR OF $K_d = 0.85$ MAY BE APPLIED PER THE ASCE-7 STANDARD.
- NO INCREASE IN ALLOWABLE STRESS HAS BEEN USED IN THE CERTIFICATION OF THIS PRODUCT. WIND LOAD DURATION FACTOR $C_d = 1.6$ WAS USED FOR WOOD SCREW ANALYSIS ONLY.
- MATERIALS, INCLUDING BUT NOT LIMITED TO STEEL SCREWS, THAT COME INTO CONTACT WITH OTHER DISSIMILAR MATERIALS SHALL MEET THE REQUIREMENTS OF FLORIDA BUILDING CODE CHAPTER 20.
- EACH LOUVER ASSEMBLY SHALL BE PERMANENTLY LABELED AS FOLLOWS:
ARROW UNITED INDUSTRIES
WYALUSING, PA
MIAMI-DADE COUNTY PRODUCT CONTROL APPROVED
- THESE LOUVERS ARE NOT TESTED FOR WATER INFILTRATION RESISTANCE, THEREFORE THE LOUVERS ARE TO BE INSTALLED IN A LOCATION WHERE THE ROOM BEHIND THE LOUVER IS DESIGNED TO DRAIN WATER PENETRATING INTO THE ROOM, AND THE ROOM WILL HOUSE WATER RESISTANT/WATER PROOF EQUIPMENT, COMPONENTS OR SUPPLIES.
- MULLED PANELS MAY BE HORIZONTALLY INSTALLED TO AN UNLIMITED NUMBER. VERTICAL STACKING OF MULLED PANELS MAY OCCUR PROVIDING A STRUCTURAL SUPPORT IS DESIGNED & INSTALLED BY OTHERS TO SUPPORT ALL LOADS TRANSFERRED FROM THE LOUVER ASSEMBLY (SINGLE PANELS MAY RUN TO UNLIMITED HEIGHT PER ELEVATION IF NO MULLION EXISTS).

ANCHOR REQUIREMENTS TABLE				
OPENING TYPE (SUBSTRATE)	FRAME CLIP TO OPENING FASTENER TYPE	MINIMUM EMBED	MINIMUM EDGE DIST.	
JAMB & NON-REINFORCED MULLION END CLIP ANCHORS				
MIN. 2X_ WOOD FRAME OR BUCK (MIN. GR. 3 & G=0.55)	NO. 14 SMS OR WOOD SCREW	1 3/8"	3/4"	
MIN. 16 GA. 33 KSI METAL STUD	1/4-14 GR. 5 SELF TAP/DRILL SCREW	FULL	1/2"	
MIN. 1/8" THK A36 STEEL	1/4-14 GR. 5 SELF TAP/DRILL SCREW	FULL	1/2"	
MIN. 1/8" THK 6063-T5 ALUM.	1/4-14 GR. 5 SELF TAP/DRILL SCREW	FULL	1/2"	
(3) MIN. C-90 CMU	(1) 1/4" CONCRETE SCREW	1 1/4"	2"	
MIN. 3000 PSI CONCRETE	(1) 1/4" CONCRETE SCREW	1 1/2"	2"	
TUBE MULLION END CLIP ANCHORS				
MIN. 2X_ WOOD FRAME OR BUCK (MIN. GR. 3 & G=0.55)	NO. 14 SMS OR WOOD SCREW	1 3/8"	3/4"	
MIN. 16 GA. 33 KSI METAL STUD	1/4-14 GR. 5 SELF TAP/DRILL SCREW	FULL	1/2"	
MIN. 1/8" THK A36 STEEL	1/4-14 GR. 5 SELF TAP/DRILL SCREW	FULL	1/2"	
MIN. 1/8" THK 6063-T5 ALUM.	1/4-14 GR. 5 SELF TAP/DRILL SCREW	FULL	1/2"	
3000 PSI CONCRETE	(2) 1/2" WEDGE ANCHOR	3 1/2"	3"	

- CONCRETE SCREWS SHALL BE ELCO ULTRACONS, ITW RAMSET/RED HEAD TAPCONS OR HILTI KWIK-CON II (HARDENED STEEL OR S.S.).
- WEDGE ANCHORS SHALL BE HILTI STAINLESS STEEL KWIK BOLT 3
- CMU IS APPLICABLE AT SIDES ONLY.

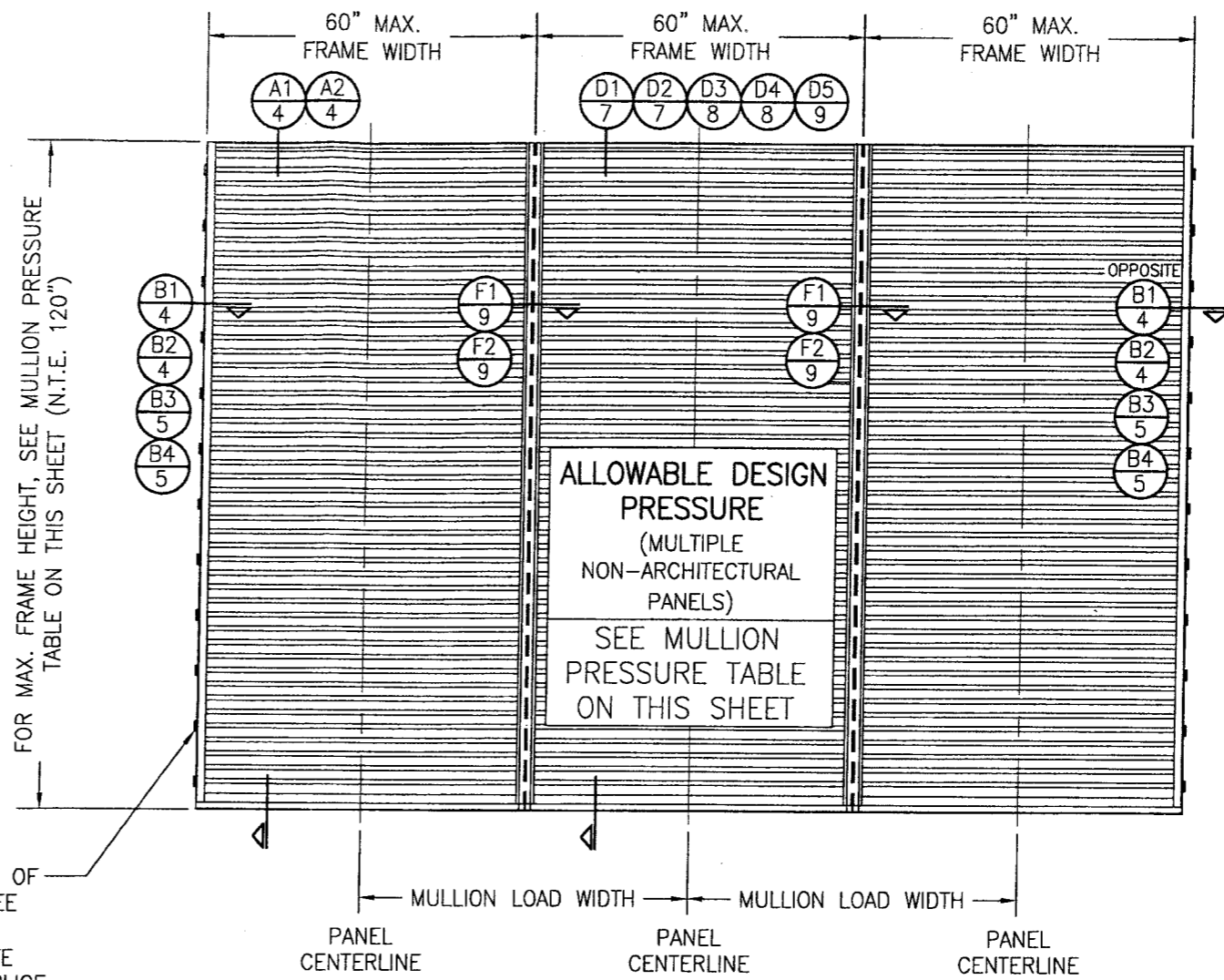
DRAWN BY: W.R.M.	CHECKED BY: W.W.S.
PLOT: 1=24	DATE: 07/23/09
NO.	REVISION DESCRIPTION
MANUFACTURER ARROW UNITED INDUSTRIES 314 RIVERSIDE DRIVE WYALUSING, PA 18853 570-746-1888	
CONSULTANTS W. W. SCHAEFER ENGINEERING & CONSULTING, P.A. 8895 N. MILITARY TRAIL, SUITE C-204 PALM BEACH GARDENS, FL 33410 PHONE: 561-775-4902 FAX: 561-775-4903	
DRAWING TITLE EA-52 IMPACT LOUVER SYSTEM	
CERTIFICATION OCT 13 2009 Approved on complying with the Florida Building Code Date 01/06/2010 NOA# 09-1015.09 Miami Dade Product Control Division By <i>[Signature]</i> WARREN W. SCHAEFER P.E. P.E. NO. 44135	
DRAWING NO. 1685	REV.
SHEET NO. 1 OF 10	

MULLION ALLOWABLE DESIGN PRESSURE
(NON-ARCHITECTURAL LOUVERS)

MAXIMUM MULLION SPAN (IN.)	MAXIMUM LOAD WIDTH (IN.)	ALLOWABLE PRESSURE (+/- PSF)		
		WITH NO TUBE MULLION	WITH 4"X3"X3/16" TUBE MULLION	WITH 4"X3"X1/4" TUBE MULLION
120	60	30.6	46.1	61.4
	54	34.0	51.2	68.3
	48	38.3	57.6	76.8
	42	43.7	65.8	87.8
	36	51.0	76.8	102.4
	30	61.2	92.2	120.0
	24	76.5	115.2	120.0
	18	102.0	120.0	120.0
108	60	42.0	63.2	84.3
	54	46.6	70.2	93.6
	48	52.5	79.0	105.3
	42	60.0	90.3	120.0
	36	70.0	105.3	120.0
	30	84.0	120.0	120.0
	24	104.9	120.0	120.0
	18	120.0	120.0	120.0
96	60	56.3	90.0	120.0
	54	62.5	100.0	120.0
	48	70.3	112.5	120.0
	42	80.4	120.0	120.0
	36	93.8	120.0	120.0
	30	112.5	120.0	120.0
	24	120.0	120.0	120.0
	18	120.0	120.0	120.0
84	60	64.3	120.0	120.0
	54	71.4	120.0	120.0
	48	80.4	120.0	120.0
	42	91.8	120.0	120.0
	36	107.1	120.0	120.0
	30	120.0	120.0	120.0
	24	120.0	120.0	120.0
	18	120.0	120.0	120.0
72	60	75.0	120.0	120.0
	54	83.3	120.0	120.0
	48	93.8	120.0	120.0
	42	107.1	120.0	120.0
	36	120.0	120.0	120.0
60	60	90.0	120.0	120.0
	54	100.0	120.0	120.0
	48	112.5	120.0	120.0
	42	120.0	120.0	120.0
48	60	112.5	120.0	120.0
	54	120.0	120.0	120.0
42	60	120.0	120.0	120.0

NOTES:
1. SEE ELEVATION FOR DIMENSIONING OF LOAD WIDTH.
2. ALLOWABLE UNIT PRESSURE SHALL BE THE LESSER OF THE PRESSURE SHOWN IN THIS TABLE & THAT SPECIFIED FOR THE INDIVIDUAL LOUVER PANEL.

FOR LOCATIONS OF JAMB CLIPS, SEE SINGLE PANEL ELEVATION (NOTE THAT FRAME SPLICE DOES NOT APPLY TO MULLED UNITS)



EXTERIOR ELEVATION;
MULTIPLE LOUVER PANELS
(NON-ARCHITECTURAL)
SCALE: 1/2" = 1'-0"
(3 PANEL UNIT SHOWN; MORE THAN 3 PANELS MAY BE MULLED/STACKED HORIZONTALLY)

DRAWN BY: W.R.M. CHECKED BY: W.W.S.
PLOT: 1=24 DATE: 07/23/09

NO.	REVISION DESCRIPTION	DATE

DRAWING TITLE: EA-52 IMPACT LOUVER SYSTEM
MANUFACTURER: ARROW UNITED INDUSTRIES
314 RIVERSIDE DRIVE, WYALUSING, PA 18853
570-746-1888

CONSULTANTS: W. W. SCHAEFER ENGINEERING & CONSULTING, P.A.
8895 N. MILITARY TRAIL, SUITE C-204, PALM BEACH GARDENS, FL 33410
PHONE: 561-775-4902 FAX: 561-775-4903

CERTIFICATION: OCT 13 2009
WARREN V. SCHAEFER, P.E.
P.E. NO. 44135

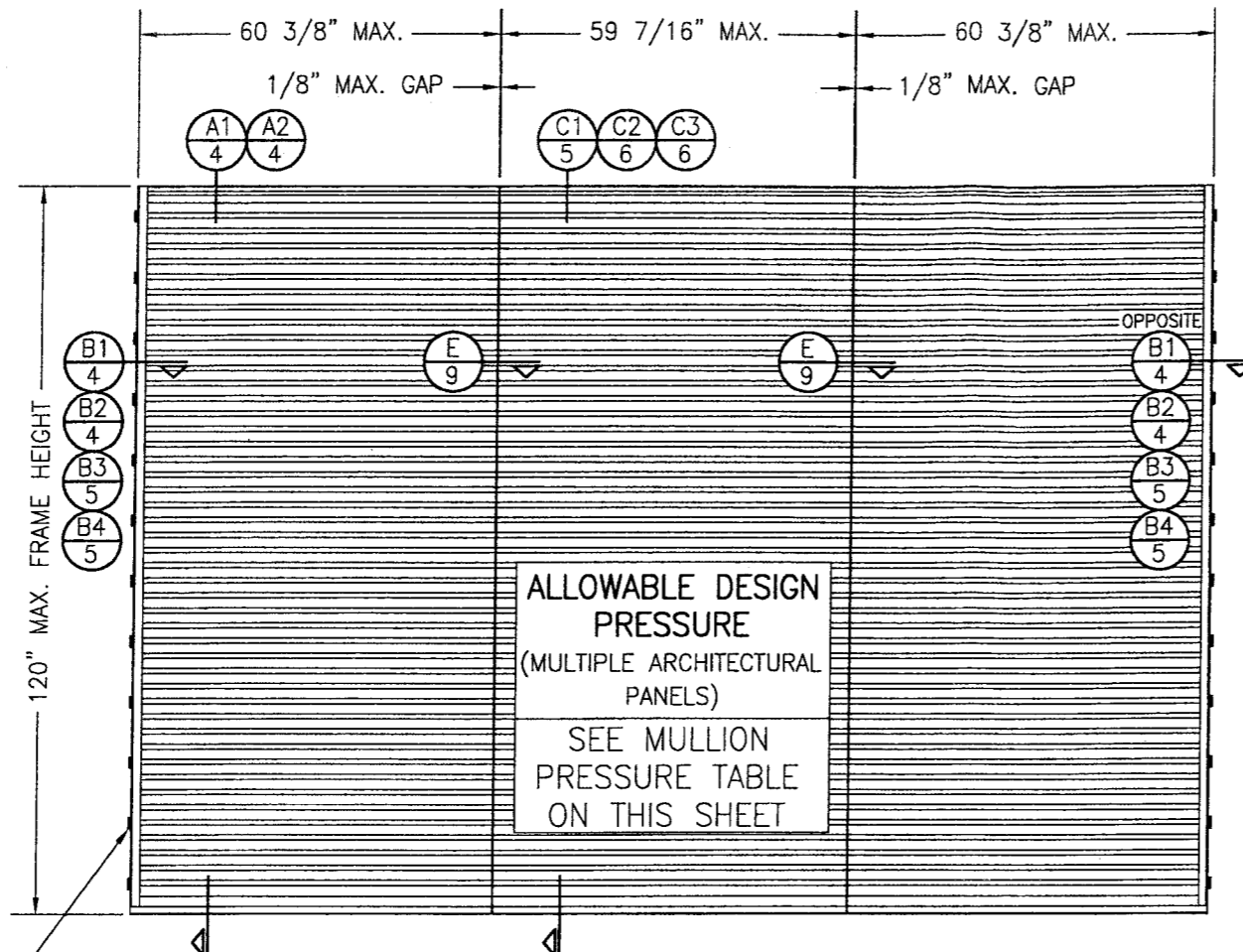
Approved as complying with the Florida Building Code
Date 01/06/2010
NOA# 09-1015-09
Miami Dade Product Control Division
By [Signature]

DRAWING NO. 1685
SHEET NO. 2 OF 10

MULLION ALLOWABLE DESIGN PRESSURE (ARCHITECTURAL LOUVERS)

MAXIMUM MULLION SPAN (IN.)	MAXIMUM LOAD WIDTH (IN.)	ALLOWABLE PRESSURE (+/- PSF)
120	60	61.4
	54	68.3
	48	76.8
	42	87.8
	36	102.4
108	60	84.3
	54	93.6
	48	105.3
96	60	120.0

NOTES:
 1. SEE ELEVATION FOR DIMENSIONING OF LOAD WIDTH.
 2. ALLOWABLE UNIT PRESSURE SHALL BE THE LESSER OF THE PRESSURE SHOWN IN THIS TABLE & THAT SPECIFIED FOR THE INDIVIDUAL LOUVER PANEL.



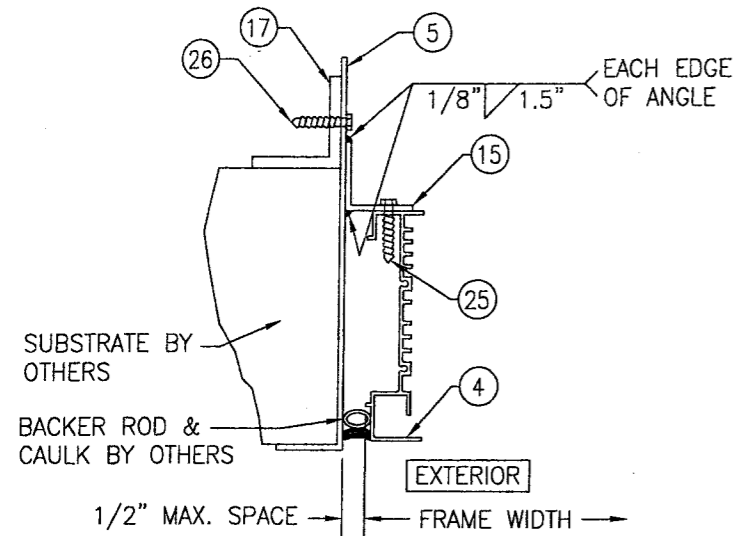
FOR LOCATIONS OF JAMB CLIPS, SEE SINGLE PANEL ELEVATION (NOTE THAT FRAME SPLICE DOES NOT APPLY TO MULLED UNITS)

**EXTERIOR ELEVATION;
 MULTIPLE LOUVER PANELS
 (ARCHITECTURAL)**
 SCALE: 1/2" = 1'-0"
 (3 PANEL UNIT SHOWN; MORE THAN 3 PANELS MAY BE MULLED/STACKED HORIZONTALLY)

ALLOWABLE DESIGN PRESSURE
 (MULTIPLE ARCHITECTURAL PANELS)
 SEE MULLION PRESSURE TABLE ON THIS SHEET

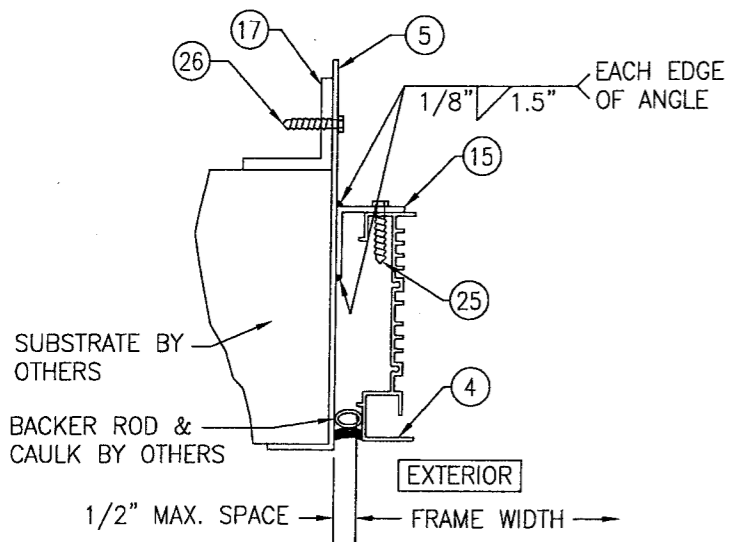
Approved as complying with the Florida Building Code
 Date 01/06/2010
 NOA# 09-1015.0
 Miami Dade Product Control Division
 By [Signature]

DRAWN BY: W.R.M.	CHECKED BY: W.W.S.
PLOT: 1=24	DATE: 07/23/09
NO.	DATE
BY	
REVISION DESCRIPTION	
DRAWING TITLE EA-52 IMPACT LOUVER SYSTEM	
CONSULTANTS W. W. SCHAEFER ENGINEERING & CONSULTING, P.A. 8895 N. MILITARY TRAIL, SUITE C-204 PALM BEACH GARDENS, FL 33410 PHONE: 561-775-4902 FAX: 561-775-4803	MANUFACTURER ARROW UNITED INDUSTRIES 314 RIVERSIDE DRIVE WYALUSING, PA 18853 570-746-1888
CERTIFICATION OCT 13 2009 WARREN W. SCHAEFER, P.E. P.E. NO. 44135	DRAWING NO. 1685
SHEET NO. 3 OF 10	REV.



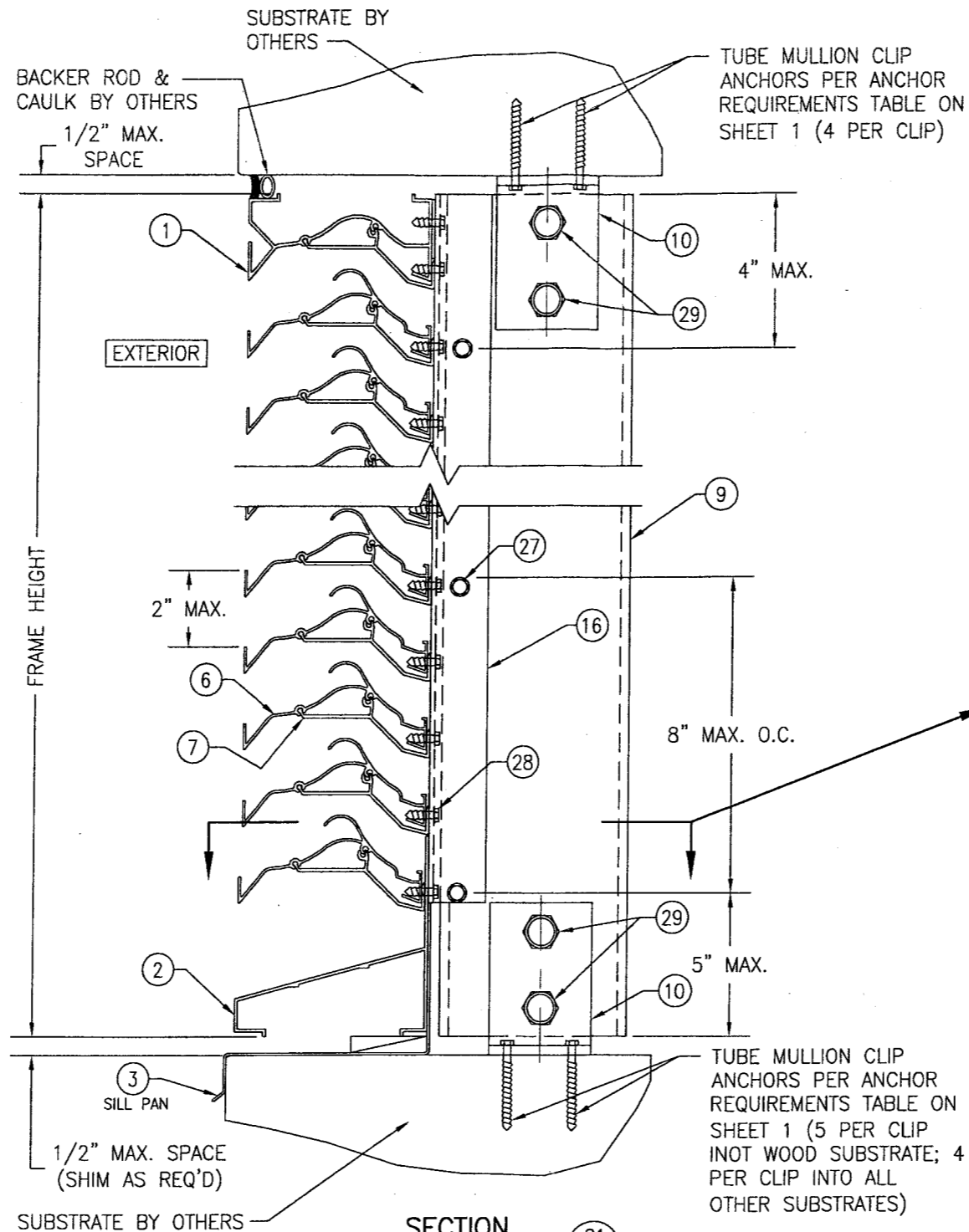
SECTION B3
SCALE: 1/2 FULL

(WITH SLEEVE & CLIPS TURNED OUT)



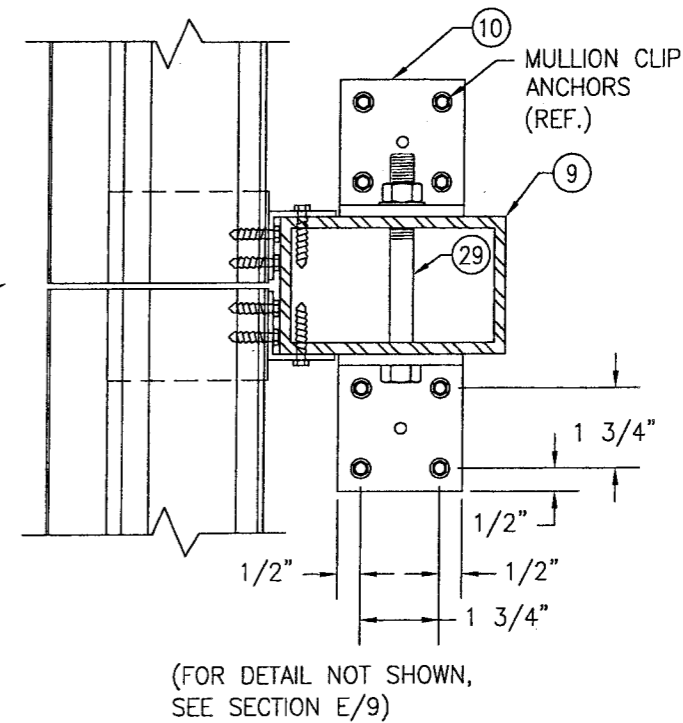
SECTION B4
SCALE: 1/2 FULL

(WITH SLEEVE & CLIPS TURNED IN)



SECTION C1
SCALE: 1/2 FULL

(ARCHITECTURAL LOUVER WITHOUT PERIMETER SLEEVE; INSTALLED INTO WOOD, STEEL, ALUMINUM, OR METAL STUD SUBSTRATE)



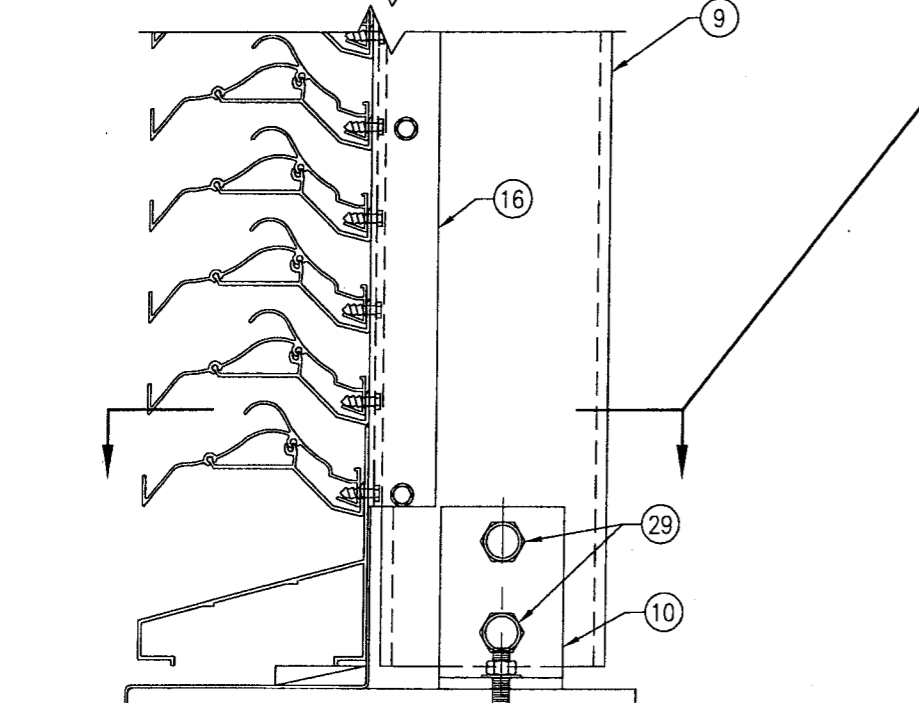
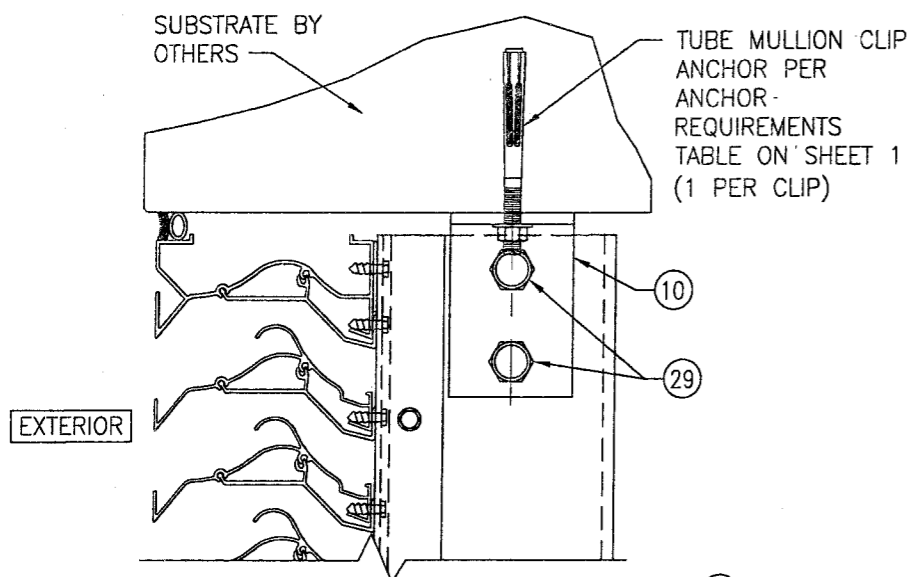
(FOR DETAIL NOT SHOWN, SEE SECTION E/9)

Approved as complying with the Florida Building Code
Date 01/06/2010
NOAH 09-1015.09
Miami Dade Product Control Division
By *[Signature]*

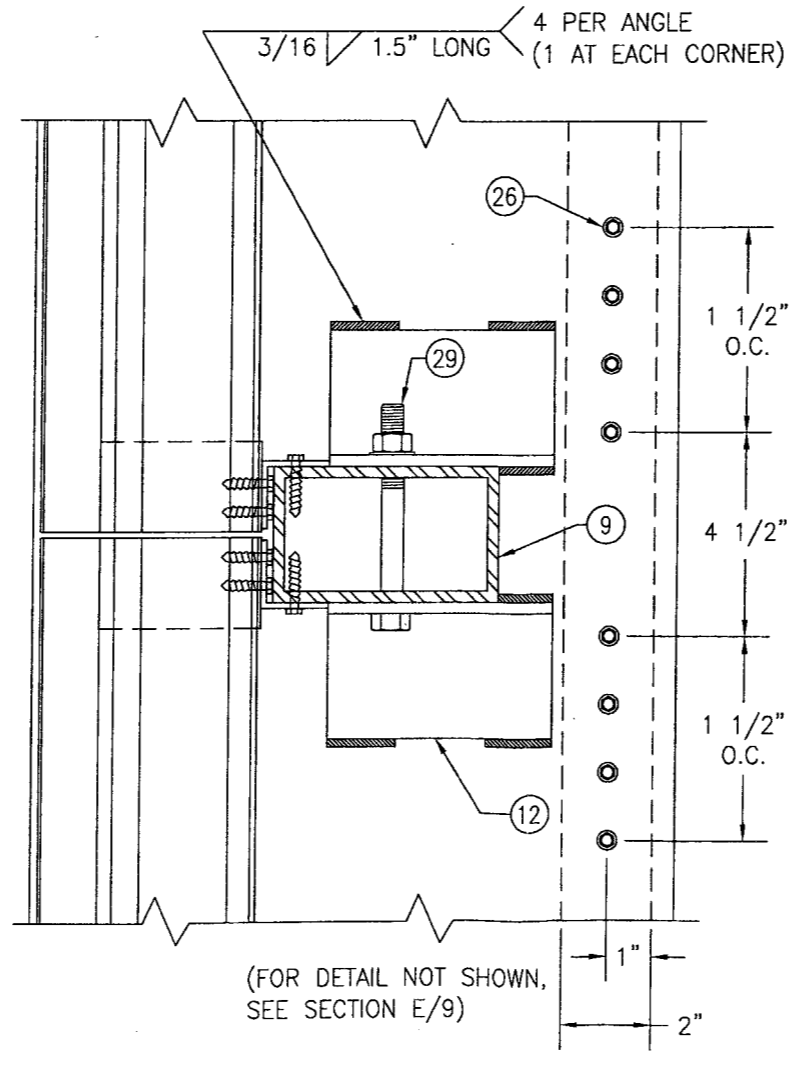
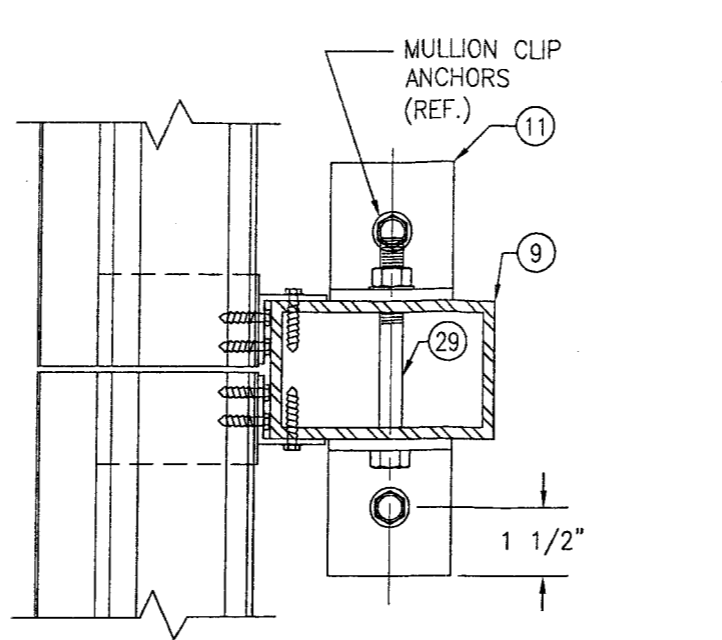
DRAWN BY: W.R.M.	CHECKED BY: W.W.S.
PLOT: 1=4	DATE: 07/23/09
NO.	DATE
BY	
REVISION DESCRIPTION	

DRAWING TITLE: EA-52 IMPACT LOUVER SYSTEM
 MANUFACTURER: ARROW UNITED INDUSTRIES
 314 RIVERSIDE DRIVE
 WYALUSING, PA 18853
 570-746-1888
 CONSULTANTS: W. W. SCHAEFER ENGINEERING & CONSULTING, P.A.
 8895 N. MILITARY TRAIL, SUITE C-204
 PALM BEACH GARDENS, FL 33410
 PHONE: 561-775-4902 FAX: 561-775-4903

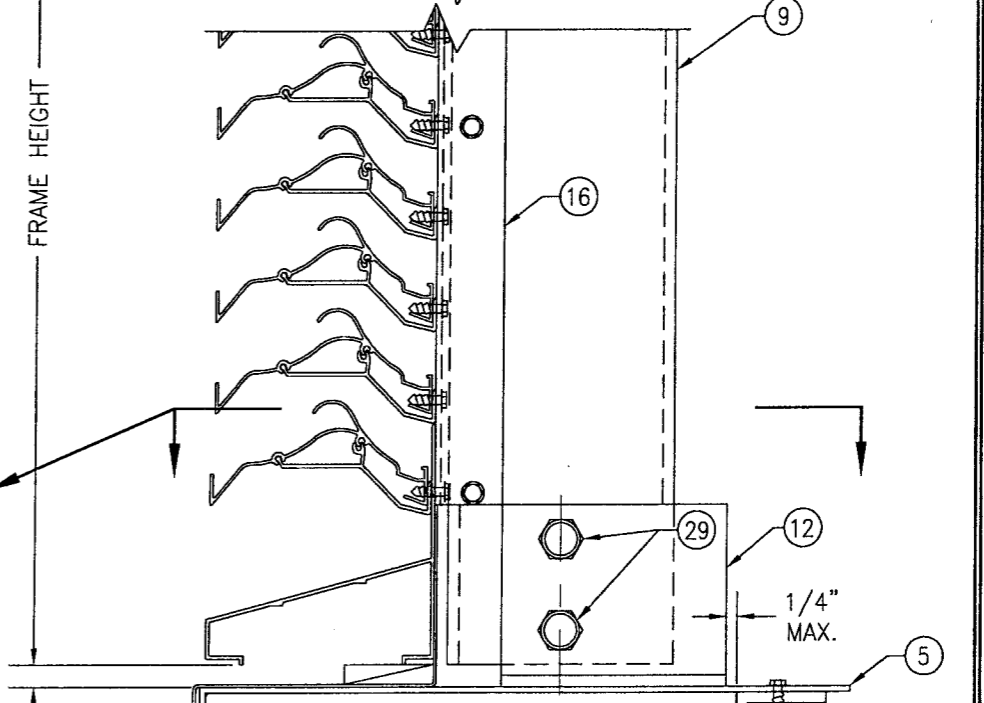
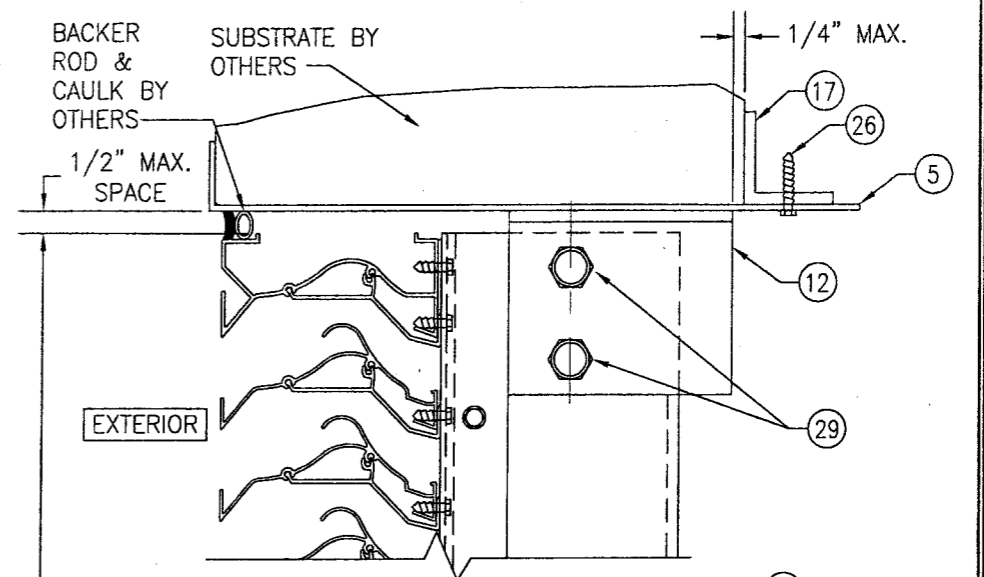
CERTIFICATION	OCT 13 2009
DRAWING NO.	1685
SHEET NO.	5 OF 10



SECTION C2
SCALE: 1/2 FULL
(ARCHITECTURAL LOUVER WITHOUT PERIMETER SLEEVE; INSTALLED INTO CONCRETE SUBSTRATE)
(FOR DETAIL NOT SHOWN, SEE SECTION C1/5)



(FOR DETAIL NOT SHOWN, SEE SECTION E/9)

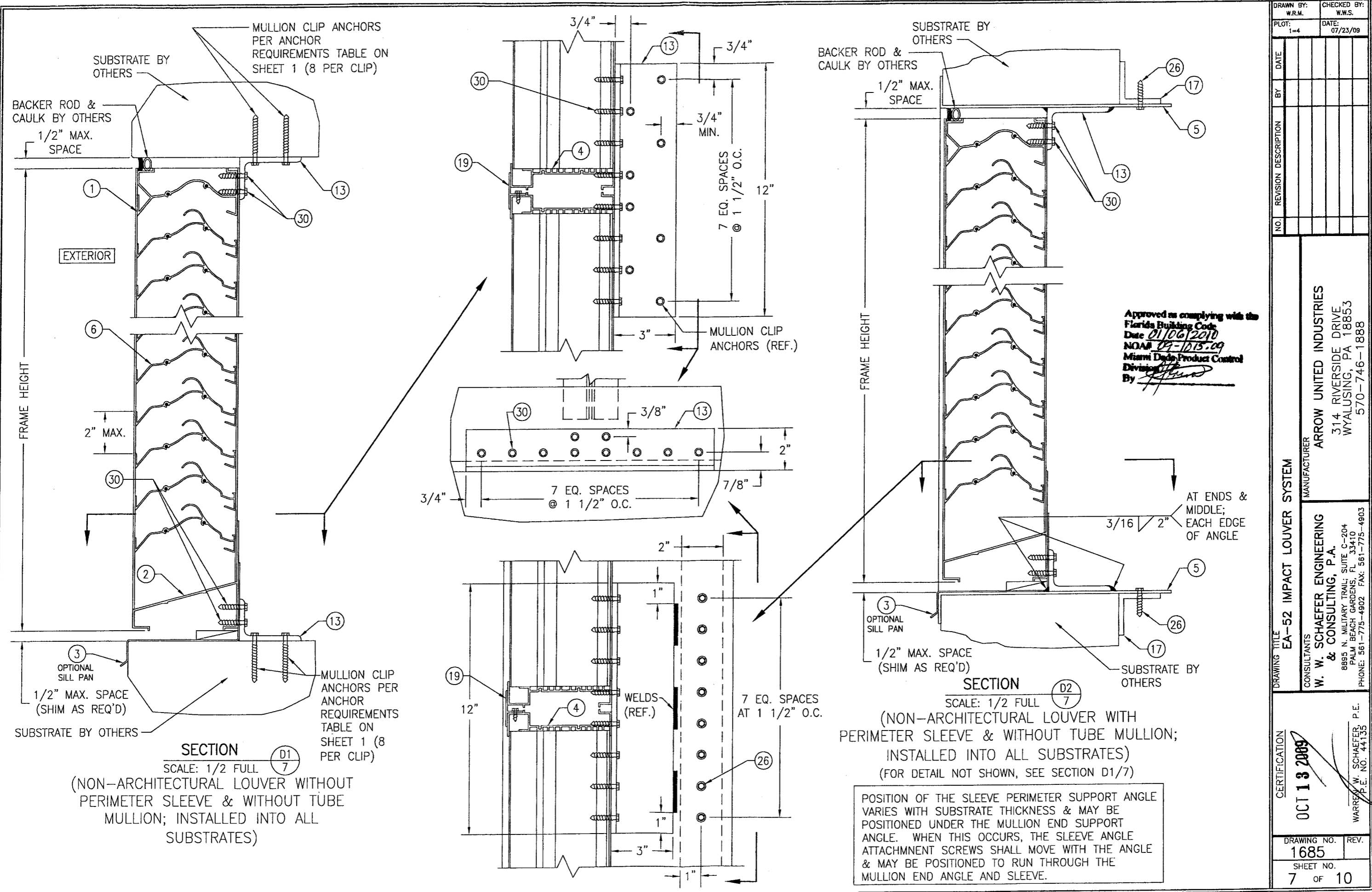


SECTION C3
SCALE: 1/2 FULL
(ARCHITECTURAL LOUVER WITH PERIMETER SLEEVE; INSTALLED INTO ALL SUBSTRATES)
(FOR DETAIL NOT SHOWN, SEE SECTION C1/5)

POSITION OF THE SLEEVE PERIMETER SUPPORT ANGLE VARIES WITH SUBSTRATE THICKNESS & MAY BE POSITIONED UNDER THE MULLION END SUPPORT ANGLE. WHEN THIS OCCURS, THE SLEEVE ANGLE ATTACHMENT SCREWS SHALL MOVE WITH THE ANGLE & MAY BE POSITIONED TO RUN THROUGH THE MULLION END ANGLE AND SLEEVE.

Approved as complying with the Florida Building Code
Date 01/06/2010
NOA# 07-1015-09
Miami Dade Product Control
Division
By [Signature]

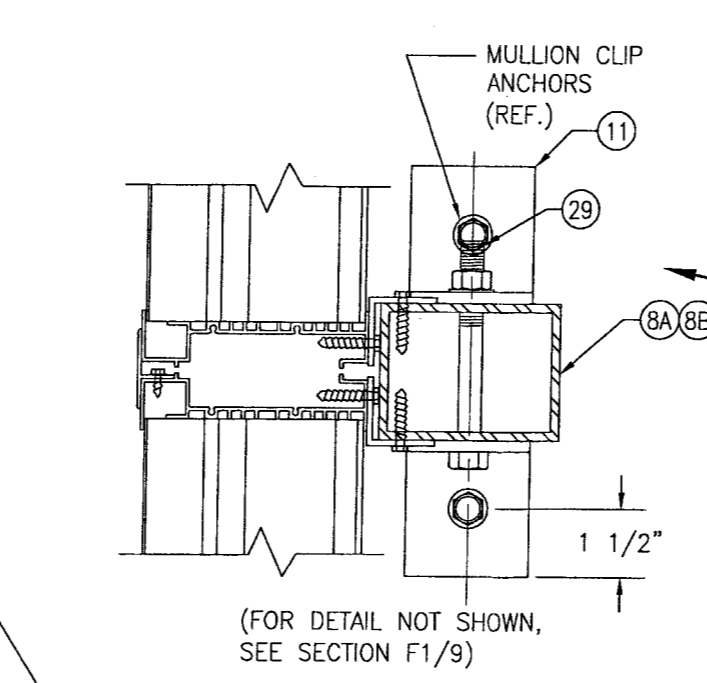
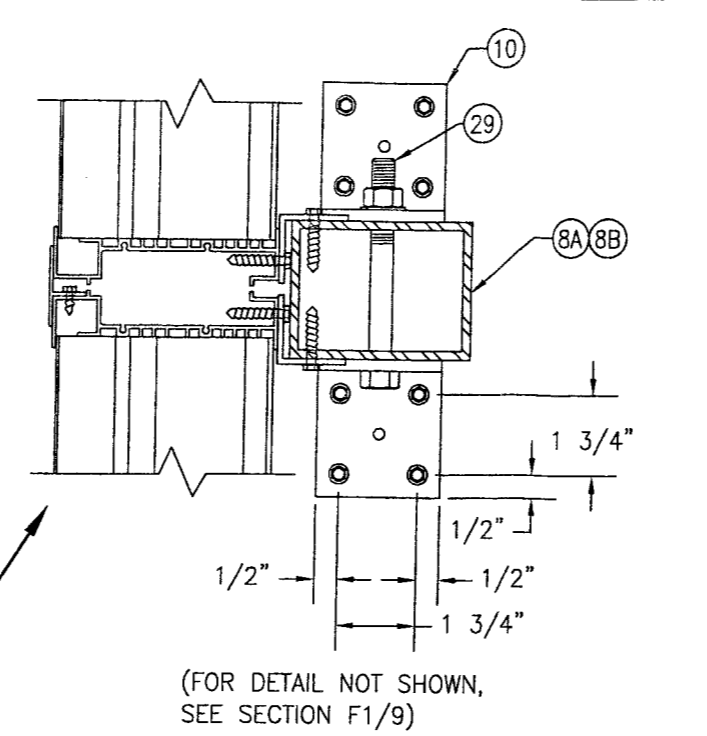
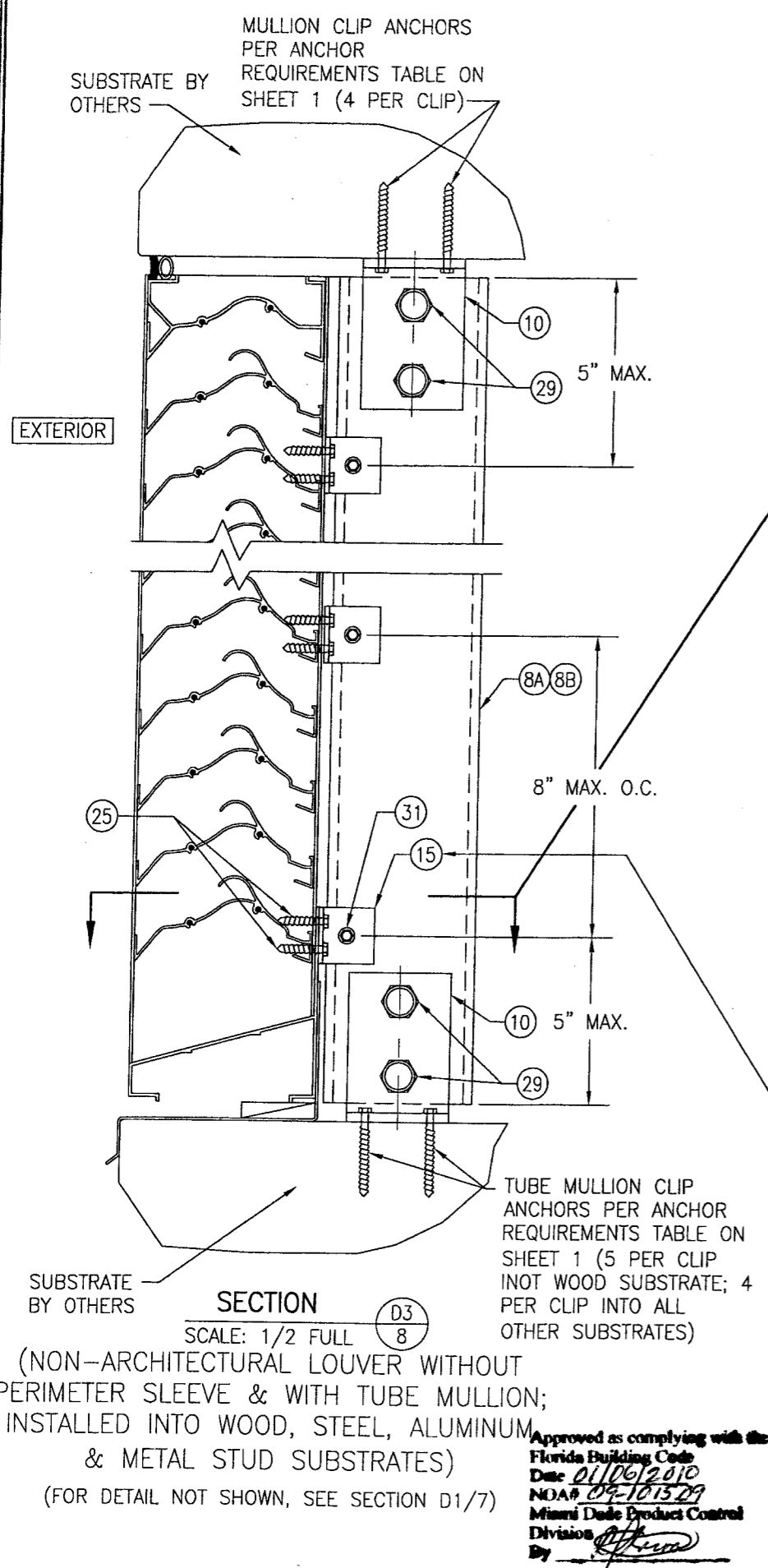
DRAWN BY: W.R.M.	CHECKED BY: W.W.S.
PLOT: 1=4	DATE: 07/23/09
NO.	DATE
BY	
REVISION DESCRIPTION	
DRAWING TITLE EA-52 IMPACT LOUVER SYSTEM	
MANUFACTURER ARROW UNITED INDUSTRIES	
CONSULTANTS W. W. SCHAEFER ENGINEERING & CONSULTING, P.A.	
8895 N. MILITARY TRAIL, SUITE C-204 PALM BEACH GARDENS, FL 33410 PHONE: 561-775-4902 FAX: 561-775-4903	
CERTIFICATION OCT 13 2009	
WARREN W. SCHAEFER, P.E. NO. 44135	
DRAWING NO. 1685	REV.
SHEET NO. 6 OF 10	



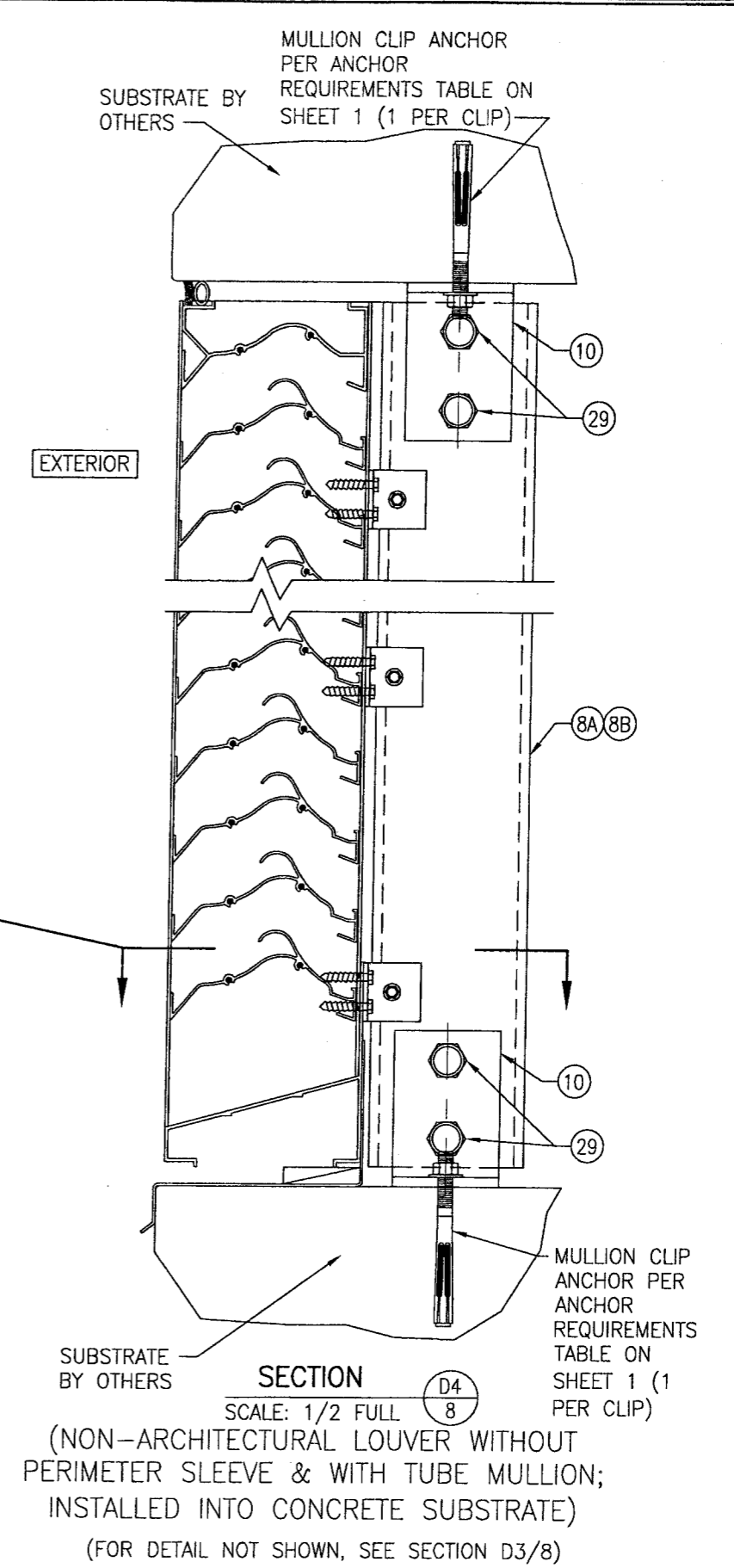
Approved as complying with the
 Florida Building Code
 Date 01/06/2010
 NOAA 09-1015.09
 Miami Dade Product Control
 Division
 By *[Signature]*

POSITION OF THE SLEEVE PERIMETER SUPPORT ANGLE
 VARIES WITH SUBSTRATE THICKNESS & MAY BE
 POSITIONED UNDER THE MULLION END SUPPORT
 ANGLE. WHEN THIS OCCURS, THE SLEEVE ANGLE
 ATTACHMENT SCREWS SHALL MOVE WITH THE ANGLE
 & MAY BE POSITIONED TO RUN THROUGH THE
 MULLION END ANGLE AND SLEEVE.

DRAWN BY: W.R.M.		CHECKED BY: W.W.S.	
PLOT: 1=4		DATE: 07/23/09	
NO.	REVISION DESCRIPTION	BY	DATE
DRAWING TITLE EA-52 IMPACT LOUVER SYSTEM			
CONSULTANTS W. W. SCHAEFER ENGINEERING & CONSULTING, P.A.		MANUFACTURER ARROW UNITED INDUSTRIES	
8895 N. MILITARY TRAIL, SUITE C-204 PALM BEACH GARDENS, FL 33410 PHONE: 561-775-4902 FAX: 561-775-4903		314 RIVERSIDE DRIVE WYALUSING, PA 18853 570-746-1888	
CERTIFICATION OCT 13 2009		WARREN W. SCHAEFER, P.E. P.E. NO. 44135	
DRAWING NO. 1685		REV.	
SHEET NO. 7		OF 10	

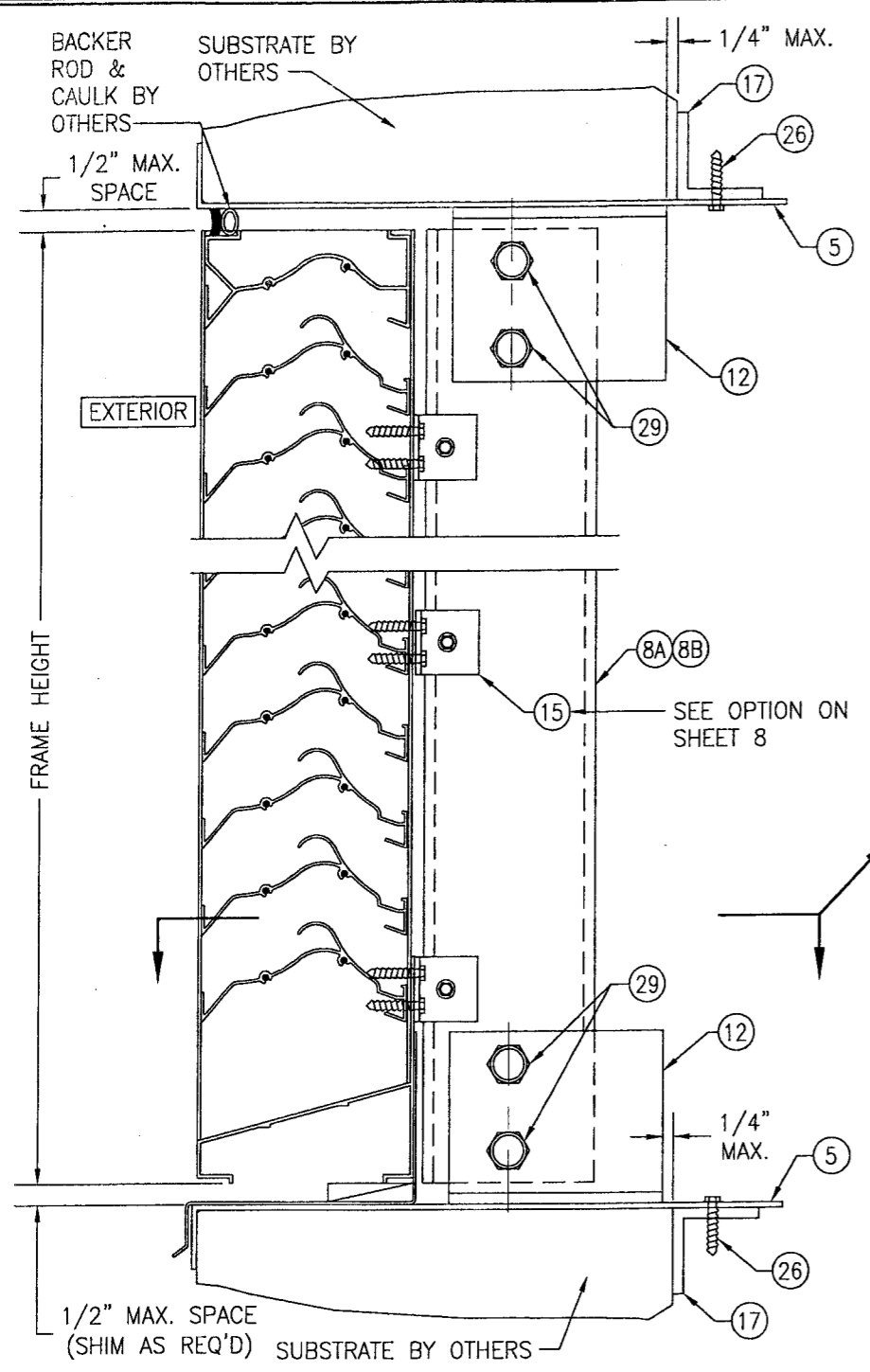


OPTION: USE A CONTINUOUS 1 1/2" X 1 1/2" X 1/8" 6063-T5 ALUMINUM ANGLE IN LIEU OF INDIVIDUAL ANGLES PART #15. ATTACH CONTINUOUS ANGLE TO TUBE MULLION WITH 1/4-14 X 3/4" SELFTAP/DRILL SCREW WITHIN 5" OF TUBE ENDS & 8" MAX. O.C. ATTACH CONTINUOUS ANGLE TO LOUVER FRAME WITH 1/4-14 X 3/4" SELF TAP/DRILL SCREWS WITHIN 5" OF FRAME ENDS & 4" O.C.



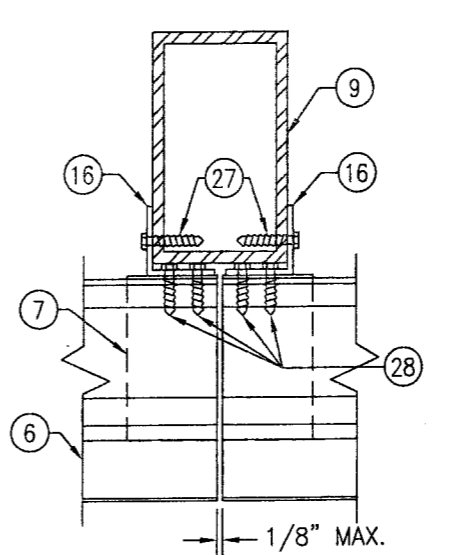
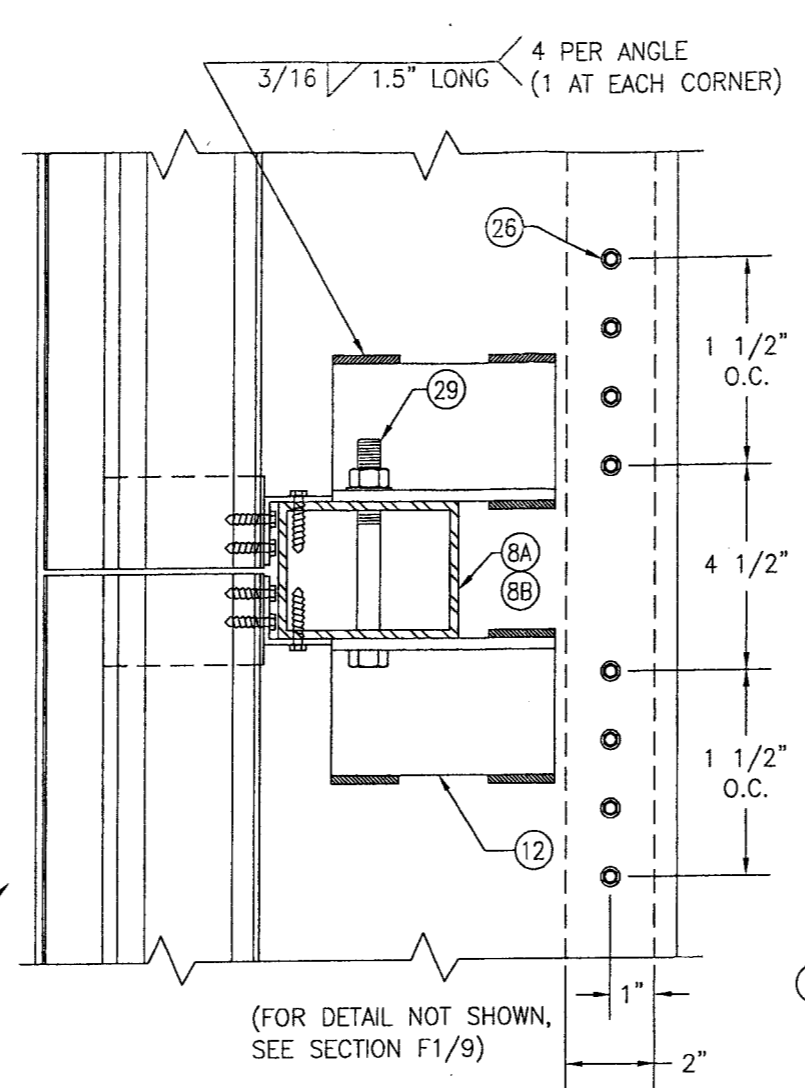
DRAWN BY: W.R.M.		CHECKED BY: W.W.S.	
PLOT: 1=4		DATE: 07/23/09	
NO.	REVISION DESCRIPTION	BY	DATE
DRAWING TITLE: EA-52 IMPACT LOUVER SYSTEM			
CONSULTANTS: W. W. SCHAEFER ENGINEERING & CONSULTING, P.A.			
MANUFACTURER: ARROW UNITED INDUSTRIES			
314 RIVERSIDE DRIVE WYALUSING, PA 18853 570-746-1888			
8895 N. MILITARY TRAIL, SUITE C-204 PALM BEACH GARDENS, FL 33410 PHONE: 561-775-4902 FAX: 561-775-4903			
CERTIFICATION: OCT 13 2009			
WARREN W. SCHAEFER, P.E. P.E. NO. 44135			
DRAWING NO. 1685		REV.	
SHEET NO. 8		OF 10	

Approved as complying with the Florida Building Code
 Date: 01/06/2010
 NOA# 09-101329
 Miami Dade Product Control Division
 By: [Signature]

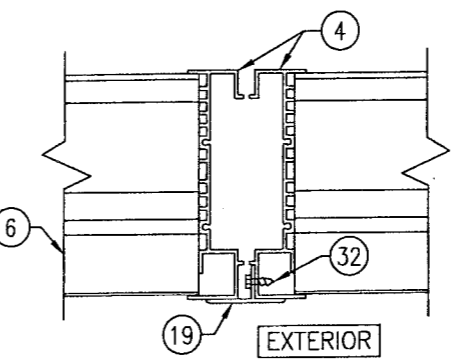


SECTION D5
SCALE: 1/2 FULL
(NON-ARCHITECTURAL LOUVER WITH PERIMETER SLEEVE & WITH TUBE MULLION; INSTALLED INTO ALL SUBSTRATES)
(FOR DETAIL NOT SHOWN, SEE SECTION D3/8)

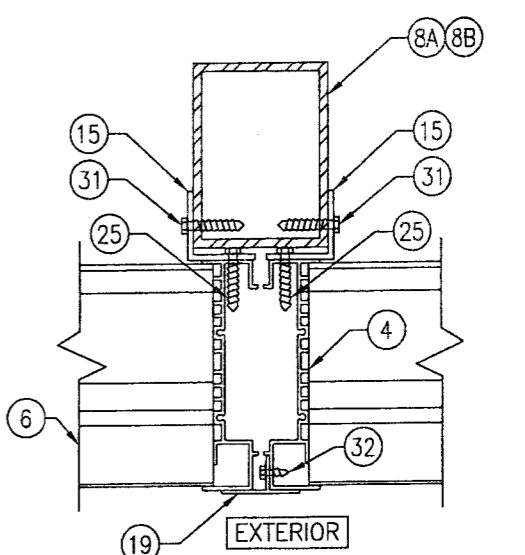
POSITION OF THE SLEEVE PERIMETER SUPPORT ANGLE VARIES WITH SUBSTRATE THICKNESS & MAY BE POSITIONED UNDER THE MULLION END SUPPORT ANGLE. WHEN THIS OCCURS, THE SLEEVE ANGLE ATTACHMENT SCREWS SHALL MOVE WITH THE ANGLE & MAY BE POSITIONED TO RUN THROUGH THE MULLION END ANGLE AND SLEEVE.



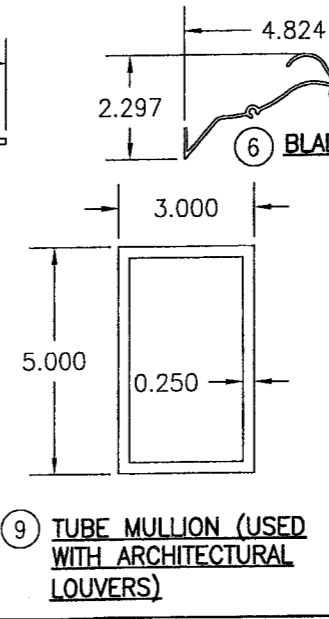
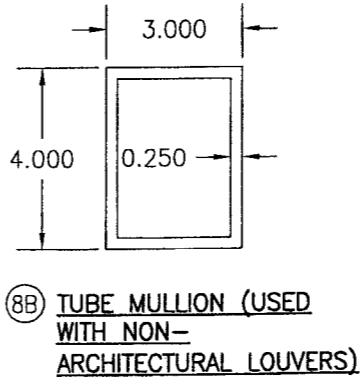
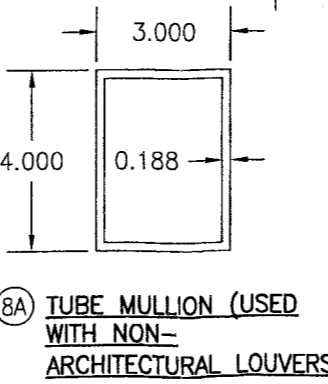
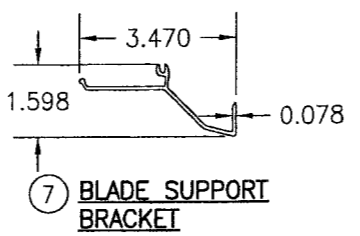
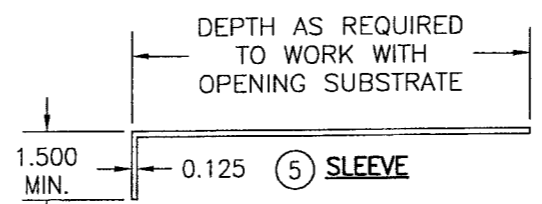
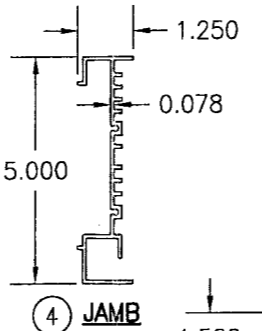
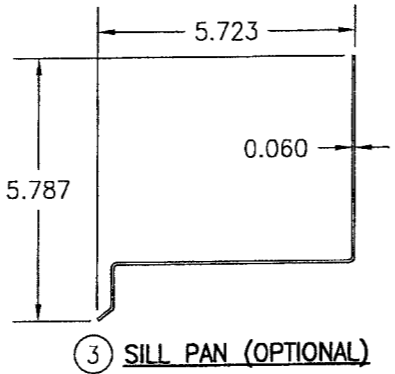
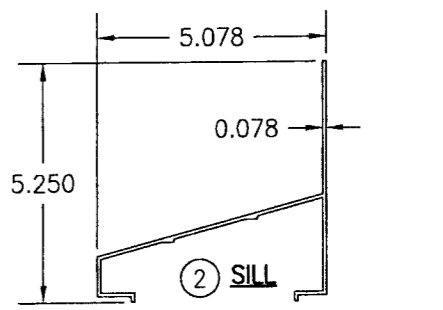
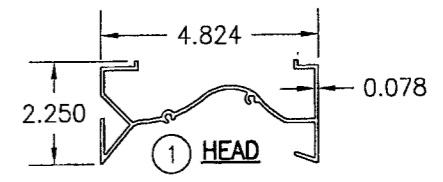
SECTION E9
SCALE: 1/2 FULL
(ARCHITECTURAL LOUVER MULLION)



SECTION F2
SCALE: 1/2 FULL
(NON-ARCHITECTURAL LOUVER WITH NO TUBE MULLION)

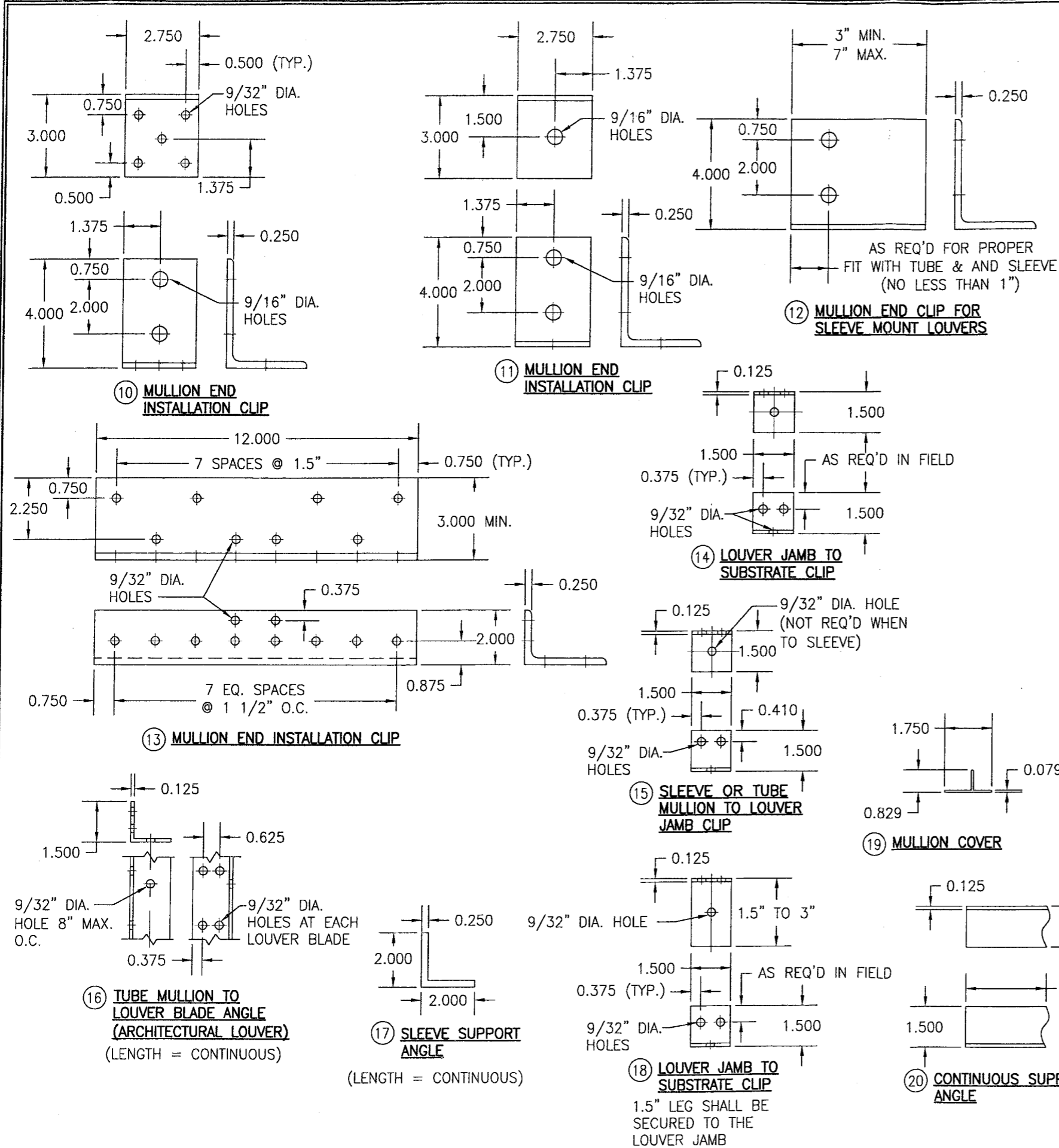


SECTION F1
SCALE: 1/2 FULL
(NON-ARCHITECTURAL LOUVER WITH TUBE MULLION)



Approved as complying with the Florida Building Code
Date 01/06/2010
NOA# 09-1015-09
Miami Dade Product Control
Division

DRAWN BY: W.R.M.		CHECKED BY: W.W.S.	
PLOT: 1=4		DATE: 07/23/09	
NO.	REVISION	DESCRIPTION	DATE
DRAWING TITLE: EA-52 IMPACT LOUVER SYSTEM			
MANUFACTURER: ARROW UNITED INDUSTRIES			
CONSULTANTS: W. W. SCHAEFER ENGINEERING & CONSULTING, P.A.			
8895 N. MILITARY TRAIL, SUITE C-204 PALM BEACH GARDENS, FL 33410 PHONE: 561-775-4902 FAX: 561-775-4903			
CERTIFICATION: OCT 13 2009			
DRAWING NO. 1685			
SHEET NO. 9 OF 10			



ITEM #	ITEM DESCRIPTION	MANUFACTURER/NOTES
PARTS		
1	HEAD	6063-T6 ALUMINUM
2	SILL	6063-T6 ALUMINUM
3	SILL PAN	6063-T5 ALUMINUM
4	JAMB	6063-T6 ALUMINUM
5	SLEEVE	5052-H32 ALUMINUM
6	BLADE	6063-T6 ALUMINUM
7	BLADE SUPPORT BRACKET	6063-T6 ALUMINUM
8A	TUBE MULLION (USED WITH NON-ARCHITECTURAL LOUVERS)	6063-T6 OR 6061-T6 ALUMINUM
8B	TUBE MULLION (USED WITH NON-ARCHITECTURAL LOUVERS)	6063-T6 OR 6061-T6 ALUMINUM
9	TUBE MULLION (USED WITH ARCHITECTURAL LOUVERS)	6063-T6 OR 6061-T6 ALUMINUM
10	MULLION END INSTALLATION CLIP	6061-T6 ALUMINUM
11	MULLION END INSTALLATION CLIP	6061-T6 ALUMINUM
12	MULLION END CLIP FOR SLEEVE MOUNT LOUVERS	6061-T6 ALUMINUM
13	MULLION END INSTALLATION CLIP	6061-T6 ALUMINUM
14	LOUVER JAMB TO SUBSTRATE CLIP	6063-T5 ALUMINUM
15	SLEEVE OR TUBE MULLION TO LOUVER JAMB CLIP	6063-T5 ALUMINUM (WITHIN 4" OF SLEEVE CORNERS OR TUBE MULLION ENDS AND MAX. 8" O.C.)
16	TUBE MULLION TO LOUVER BLADE ANGLE (ARCHITECTURAL LOUVER)	6063-T5 ALUMINUM
17	SLEEVE SUPPORT ANGLE	6063-T5 ALUMINUM
18	LOUVER JAMB TO SUBSTRATE CLIP	6063-T5 ALUMINUM
19	MULLION COVER	6063-T5 ALUMINUM
20	CONTINUOUS SUPPORT ANGLE	6063-T5 ALUMINUM
21	CONTINUOUS SUPPORT ANGLE	6063-T5 ALUMINUM
MISC. FASTENERS		
25	1/4-14 X 3/4" SELF TAP/DRILL SCREW	2 PER CLIP
26	1/4-14 X 3/4" SELF TAP/DRILL SCREW	WITHIN 4" OF CORNERS & SLEEVE SPLICES & MAX. 8" O.C. (CLUSTERED AT MULLION ENDS PER DETAILS)
27	1/4-14 X 3/4" SELF TAP/DRILL SCREW	8" O.C. PER SECTIONS
28	1/4-14 X 3/4" SELF TAP/DRILL SCREW	4 AT HEAD & 2 PER BLADE
29	1/2" X 5" A307 HEX HEAD PLATED STEEL OR S/STL NUT & BOLT	2 PER MULLION END
30	1/4-14 X 3/4" SELF TAP/DRILL SCREW	10 PER CLIP
31	1/4-14 X 3/4" SELF TAP/DRILL SCREW	1 PER CLIP
32	NO. 7 X 1/2" SMS SCREW	WITHIN 6" OF CORNERS & 24" MAX. O.C.
33	1/4-14 X 3/4" SELF TAP/DRILL SCREW	SEE ANCHOR SPACING/PRESSURE TABLE FOR SPACING REQUIREMENTS

DRAWN BY: W.R.M.	CHECKED BY: W.W.S.	DATE: 07/23/09
PLOT: 1=4		
NO.	REVISION DESCRIPTION	DATE
DRAWING TITLE EA-52 IMPACT LOUVER SYSTEM		
MANUFACTURER ARROW UNITED INDUSTRIES 314 RIVERSIDE DRIVE WYALUSING, PA 18853 570-746-1888		
CONSULTANTS W. W. SCHAEFER ENGINEERING & CONSULTING, P.A. 8895 N. MILITARY TRAIL, SUITE C-204 PALM BEACH GARDENS, FL 33410 PHONE: 561-775-4902 FAX: 561-775-4903		
CERTIFICATION OCT 13 2009 WARREN W. SCHAEFER, P.E. P.E. NO. 44135	Approved as complying with the Florida Building Code Date 01/06/2010 NO. 09-1015-09 Miami Dade Product Control Division By <i>[Signature]</i>	
DRAWING NO. 1685	REV.	SHEET NO. 10 OF 10