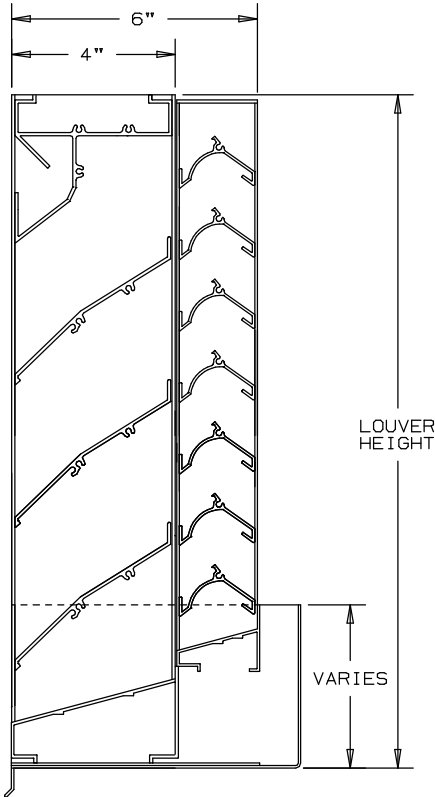


ARROW

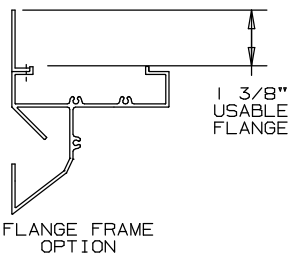
EXTRUDED ALUMINUM LOUVERS
6" DEEP-COMBINATION STATIONARY
HORIZONTAL

TYPE
EA-620

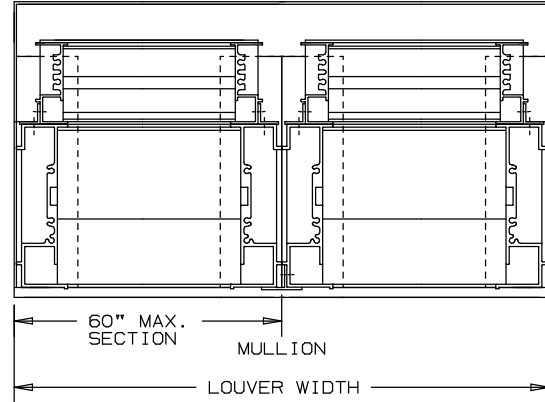
RAIN RESISTANT STORM LOUVER



NOT TO SCALE



FLANGE FRAME
OPTION



SPECIFICATIONS

MATERIAL: EXTRUDED ALUMINUM 6063-T6/T52 ALLOY
FRAMES: EXTERIOR FRAME IS 4" DEEP, .081" THICK NOMINAL.
 INTERIOR FRAME IS 2" DEEP, .063" THICK NOMINAL.
BLADES: SIGHT PROOF DOUBLE BLADE WITH EXTERIOR BLADE AT 37° ANGLE, 3 1/2" CENTERS. INTERIOR BLADE IS HORIZONTAL CHEVRON ON 1 3/4" CENTERS.
FACE OF LOUVER: FULL WIDTH SILL WITH HEAD AND BLADES CONTAINED IN JAMBS.
SCREENS: WHEN INDICATED, IN A REMOVABLE FRAME.
 BIRD SCREEN - 1/2" FLATTENED ALUMINUM, .051" THK.
 OR - 1/2" SQ. MESH, INTERMEDIATE DOUBLE-CRIMPED ALUMINUM WIRE, .063 DIA.
 OR - 18/16 MESH, .011" DIA. ALUMINUM WIRE, INSECT SCREEN.
DRAIN SILL PAN: .060" THICK FORMED ALUMINUM.
FINISH: _____
LOUVER SIZES: 12" x 12" MINIMUM PANEL SIZE.
 60" x 96" MAXIMUM PANEL SIZE.

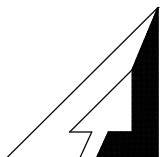
LOUVER PERFORMANCE STATEMENT

LOUVER MODEL EA-620 SHALL BE FABRICATED TO PROVIDE A MINIMUM FREE AREA (44%), 7.07 SQUARE FEET OF FREE AREA FOR A 48"x48" SIZE LOUVER, WITH .097 INCHES WATER GAUGE PRESSURE DROP AT 800 FPM FOR AIR INTAKE. IN ADDITION, THIS LOUVER MODEL IS ALSO TESTED TO THE AMCA 500-L-99 WIND DRIVEN RAIN TEST STANDARD. WHERE THE LOUVER IS SUBJECTED TO SIMULATED WIND DRIVEN RAIN, THE RESULT OF THIS TEST SHALL SHOW A CLASS "A" RATING HAVING (99.1%) EFFICIENCY AT 3 INCHES OF RAINFALL AT AN INTAKE VELOCITY OF 260 FPM (1838 CFM) AT A WIND SPEED OF 29 MPH, FOR A SIZE 48"x48".

FOR CERTIFIED RATINGS
AUTHORIZED BY AMCA
-SEE REVERSE SIDE

NOMINAL DEDUCTIONS WILL BE MADE TO THE OPENING SIZE GIVEN.

												 UNION MADE
ITEM	QTY.	WIDTH	HEIGHT	WIDTH	HEIGHT	MULL	TYPE	LOC				
		OPENING SIZE		LOUVER SIZE					SCREENS			



ARROW UNITED INDUSTRIES
A DIVISION OF MESTEK, INC.

314 RIVERSIDE DRIVE
WYALUSING, PA 18853

TEL: (570) 746-1888 FAX: (570) 746-9286
WEB ADDRESS: WWW.ARROWUNITED.COM

AGENT: _____

ARCH./ENG. :

CONTR. :

PROJECT :

EDR: _____ ECN: _____ JOB: _____

DATE: _____ DWN.: _____ DWG.: _____

LOUVER MODEL EA-620

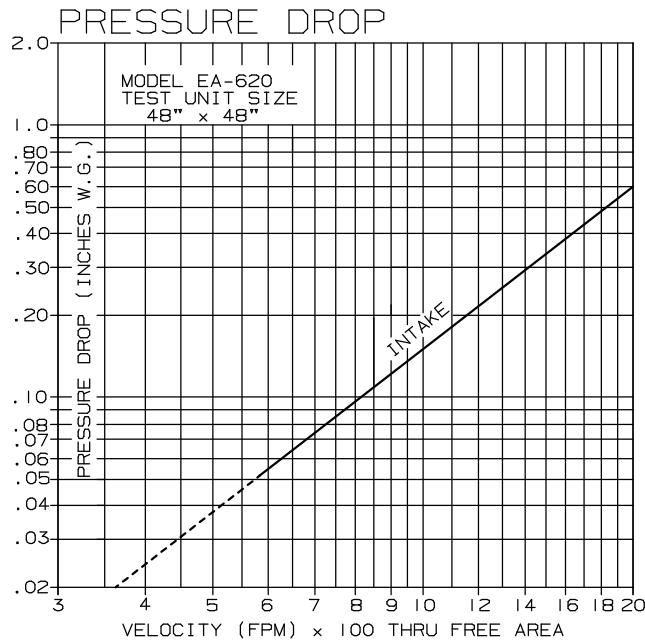
WIND DRIVEN RAIN RESISTANT LOUVER

EXTRUDED ALUMINUM - STATIONARY

PERFORMANCE DATA

TESTS OF A 48"x48" ACCORDING TO AMCA STANDARD 500-L-99
SHOWS LESS THAN .160 INCHES WATER GAUGE PRESSURE DROP
AT 1000 FPM (INTAKE).

RATINGS DO NOT INCLUDE EFFECTS OF BIRDSCREEN.



FREE AREA

		FREE AREA (SQ. FT.)								
		WIDTH								
HEIGHT		12"	18"	24"	30"	36"	42"	48"	54"	60"
	12"	.17	.29	.40	.51	.62	.73	.84	.95	1.06
	24"	.58	.96	1.33	1.70	2.08	2.45	2.82	3.20	3.57
	36"	.99	1.63	2.26	2.90	3.54	4.17	4.81	5.44	6.08
	48"	1.40	2.30	3.20	4.10	4.99	5.89	7.07	7.69	8.58
	60"	1.81	2.97	4.13	5.29	6.45	7.61	8.77	9.93	11.09
	72"	2.22	3.64	5.07	6.49	7.91	9.33	10.75	12.17	13.59
	84"	2.63	4.32	6.00	7.68	9.37	11.05	12.73	14.42	16.10
96"	2.98	4.89	6.80	8.71	10.62	12.52	14.43	16.34	18.25	

LOUVER MODEL EA-620

PERFORMANCE DATA

WIND DRIVEN RAINWATER PENETRATION TEST CONDUCTED TO AMCA STANDARD 500-L-99

TEST SIZE 1M x 1M (39.37" x 39.37") CORE AREA, NOMINAL
LOUVER FREE AREA 5.64 SQUARE FEET

CORE VENTILATION (M/S)	0.0	0.5	1.0	1.5	2.0	2.5	3.0	3.5	RAINFALL/MPH
FPM	0	136	187	303	379	475	577	686	3 IN/HR RAINFALL AND 29 MPH VELOCITY
FREE AREA VENTILATION (CFM)	0	1469	2013	3259	4080	5110	6215	7382	
FREE AREA VELOCITY (FPM)	0	260	357	578	723	906	1102	1309	
EFFECTIVE RATING CLASS	A	A	B	B	B	B	C	C	

DISCHARGE COEFFICIENT
INTAKE $C_d = 0.33$ (CLASS 2)

WIND DRIVEN RAIN PENETRATION CLASSIFICATIONS	
CLASS	EFFECTIVENESS %
A	1 TO 0.99%
B	0.989 TO 0.95%
C	0.949 TO 0.80%
D	BELOW 0.80%

DISCHARGE LOSS COEFFICIENT CLASSIFICATIONS	
CLASS	DISCHARGE LOSS COEFFICIENT
1	0.4 AND ABOVE
2	0.3 TO 0.399
3	0.2 TO 0.299
4	0.199 AND BELOW

CLASS 1 LOSS COEFFICIENT HAS THE LEAST
RESISTANCE TO AIRFLOW.

1. CORE AREA IS THE FRONT OPENING OF A LOUVER ASSEMBLY WITH THE BLADES REMOVED.
2. CORE AREA VELOCITY IS THE AIRFLOW RATE THROUGH THE LOUVER DIVIDED BY THE CORE AREA (39.37"x39.37")
3. FREE AREA IS THE MINIMUM AREA THROUGH WHICH AIR CAN PASS. IT IS DETERMINED BY MULTIPLYING THE SUM OF THE MINIMUM DISTANCES BETWEEN INTERMEDIATE BLADES, TOP BLADE AND HEAD, BOTTOM BLADE AND SILL, BY THE MINIMUM DISTANCE BETWEEN JAMBS.
4. DISCHARGE LOSS COEFFICIENT IS CALCULATED BY DIVIDING A LOUVER ACTUAL AIRFLOW RATE VS. A THEORETICAL AIRFLOW FOR THE OPENING, PROVIDING AN INDICATION OF THE LOUVER AIR FLOW CHARACTERISTICS.



ARROW UNITED CERTIFIES THAT THE MODEL EA-620 SHOWN HEREIN IS LICENSED TO BEAR THE AMCA SEAL. THE RATINGS SHOWN ARE BASED ON TESTS AND PROCEDURES PERFORMED IN ACCORDANCE WITH THE AMCA PUBLICATION 511 AND COMPLY WITH THE REQUIREMENTS OF THE AMCA CERTIFIED RATINGS PROGRAM. THE AMCA CERTIFIED RATINGS SEAL APPLIES TO AIR PERFORMANCE AND WIND DRIVEN RAIN RATINGS ONLY.